

# Iride Quadra

PARTITION  
WALL SYSTEM



**LINE**  
**OFFICE**

---



## STRUCTURE AND TECHNICAL DATA

TECHNICAL FEATURES .....	4
HANDLES AND ACCESSORIES .....	8
TECHNICAL CERTIFICATIONS .....	16
MODULE CONFIGURATIONS AND TECHNICAL DATA .....	18
STRUCTURAL COMPONENTS .....	21

## FINISHES

AVAILABLE FINISHES .....	29
--------------------------	----

### PANEL FINISHES

SOLID COLORS .....	30
WOOD EFFECT .....	32
FABRIC EFFECT .....	33

### ALUMINUM FINISHES

SERIES AND RAL .....	35
SPARK .....	36
SATIN .....	37
SILK .....	38
WOOD .....	39
CORTEN .....	40

# Technical features



IRIDE QUADRA is a demountable "structural" partition wall with a thickness of 100mm. Its design ensures maximum flexibility over the time thanks to a variety of modules available in different widths and heights aimed at meeting the most demanding projects.

## STRUCTURE

The internal bearing structure is in steel and fast interlock assembling and disassembling operations make it very stable without any counterforce from the top. The structure is made up of:

**Studs** in galvanized steel sheet 12/10 thick and 58mm wide, slotted on the front sides for the bayonet coupling pins of the partition wall panels. The studs have grey reticulate closed-cell expanded polyester gaskets with dust-free, acoustic and heat-resistance properties. At the bottom, levelling feet allowing  $\pm 20$  adjustment.

U top and bottom **metal tracks** in grey epoxy powder painted steel sheet. The bottom feet are mounted inside the track flanges;

**Crossbeams** in galvanized steel sheet, 8/10mm thick, installed at the same height as the panel joints. They are securely fastened on the stud sides and are equipped with grey reticulated closed-cell expanded polystyrene **gaskets** with

dust-free, acoustic and heat-resistance properties. The minimum overall thickness of the modular partition wall is 100mm and the minimum gap between the internal sides of the panels is 64mm. Gaskets, self-extinguishing adhesive and mousse in type, are grey and placed on studs, crossbeams and tracks.

## PARTITION WALL

Each partition wall uses side infill panels that perfectly connect to existing masonry walls. These panels have the same pattern as the adjoining partition wall panels and are correctly aligned with those already installed. The fast and easy assembly system on site allows the compensation of possible uneven floors and ceilings. The cable passage (PCs, telephone networks, electrical systems, etc.) is both horizontal and vertical.

---

### PARTITION WALL THICKNESS 100mm

## PANELS

The solid panels on both sides of the partition wall are scratch-resistant and anti-reflex, independently assemblable and disassemblable for replacements or inspection.

The joints, i.e. the spacings between adjoining panels, are 8mm wide and without cover profiles to avoid complex assembling operations.

The panels are in melamine-faced wooden agglomerate, minimum 18mm thick, and in lowest formaldehyde emission Class E1 with perimeter 10/10 ABS edging in configurable colors.

## DOORS

The partition wall system also includes wooden or glass hinged doors (frameless or aluminum framed), and single or double sliding doors, both wooden or glazed (frameless or aluminum framed).

### HINGED DOORS

#### WOODEN HINGED

Single/Double Leaf

#### GLASS HINGED

Single/Double Leaf

#### FRAMED GLASS HINGED

(56mm H FRAME) Single/Double Leaf

#### FRAMED GLASS HINGED

(16mm H FRAME) Single/Double Leaf

#### FRAMED WOODEN HINGED

(56mm H FRAME) Single/Double Leaf

### EXTERNAL SLIDING DOORS

#### WOODEN SLIDING

Single/Double Leaf

#### GLASS SLIDING

Single/Double Leaf

#### FRAMED SLIDING

(16mm H FRAME) Single/Double Leaf

### POCKET SLIDING DOORS

#### WOODEN SLIDING

Single/Double Leaf

#### GLASS SLIDING

Single/Double Leaf

**Door frame** in extruded aluminum profile with grey rebate seal.

Hollow core **wooden door leaf**, 43mm thick, 10/10 ABS edging.

**Models of handles** available in the catalogue.

**Glass door leaf** in 8-10mm clear tempered glass with aluminum hinges.

**Models of handles** available in the catalogue.

## GLASS WALLS

Glazed modules have fixed perimeter frames in extruded aluminum profiles (45-degree cut corner junctions) visible on both sides of the partition wall, internal perimeter PVC gaskets and 5mm thick tempered clear glass sheets on both sides.

The two glazed sheets are coplanar with the perimeter frames, which are in turn coplanar with the contiguous solid infill panels.

## GLASS TYPES

5mm TEMPERED

3.3.1 LAMINATED - Single-Glazed Window only

3.3.1 SILENCE LAMINATED - Single-Glazed Window only

## ANGLES

MELAMINE

SQUARE

2-WAY VARIABLE ANGLE

3-WAY VARIABLE ANGLE

# Sliding door handles

WOODEN AND GLASS DOORS WITHOUT LOCKS



ROUND LADDER PULL HANDLE  
40cm H / 120cm H



SQUARE LADDER PULL HANDLE  
40cm H / 120cm H



LADDER PULL HANDLE LONDON 22cm H



## HANDLES WITH LOCKS



ALNA - Glass Sliding Door



BONAITI - Wooden Sliding Door



Ladder pull handle with floor lock

# Hinged door handles

## WOODEN HINGED DOORS



ARLES



PARIS



GENEVE



TOULON



AMSTERDAM

PANIC BAR HANDLES AVAILABLE FOR ALL TYPES OF HINGED DOORS

FRAMELESS GLASS HINGED DOORS



ARLES



PARIS



GENEVE



TOULON



AMSTERDAM

# Hinged door handles

FRAMED GLASS HINGED DOORS - 56mm H FRAME



ARLES



PARIS



GENEVE



TOULON



AMSTERDAM

PANIC BAR HANDLES AVAILABLE FOR ALL TYPES OF HINGED DOORS

FRAMED GLASS HINGED DOORS - 16mm H FRAME



ARLES



PARIS



GENEVE



TOULON



AMSTERDAM



# Accessories



TOUCH ON-UP Button



SNAP-IN IP67 Button



Venetian Blinds



# Certifications

SAMPLE	STANDARD NUMBER	TITLE	RESULT
INTERIOR PARTITION WALL	UNI 8201:1981	Simple interior partition walls. Resistance shock test with soft body. Par. 2 shock test with 50kg soft body.	COMPLIANT
	UNI 8201:1981	Simple interior partition walls. Resistance shock test with soft body. Par. 3 shock test with 3kg soft body.	COMPLIANT
	UNI 8201:1981	Simple interior partition walls. Resistance shock test with hard body. Par. 4 shock test with 1kg hard body.	COMPLIANT
	UNI 8201:1981	Simple interior partition walls. Resistance shock test with hard body. Par. 5 shock test with 0.5kg hard body.	COMPLIANT
INSULATED WOODEN PARTITION WALL	UNI EN ISO 10140-2:2010 + UNI EN ISO 717-1:2013	Laboratory measurements of airborne sound insulation of 100mm partition wall.	Rw 41 dB
INSULATED WOODEN AND GLAZED PARTITION WALL	UNI EN ISO 10140-2:2010 + UNI EN ISO 717-1:2013	Laboratory measurements of airborne sound insulation of 100mm partition wall.	Rw 40 dB
WOODEN PARTITION WALL	UNI EN ISO 10140-2:2010 + UNI EN ISO 717-1:2013	Laboratory measurements of airborne sound insulation of 100mm partition wall.	Rw 32 dB



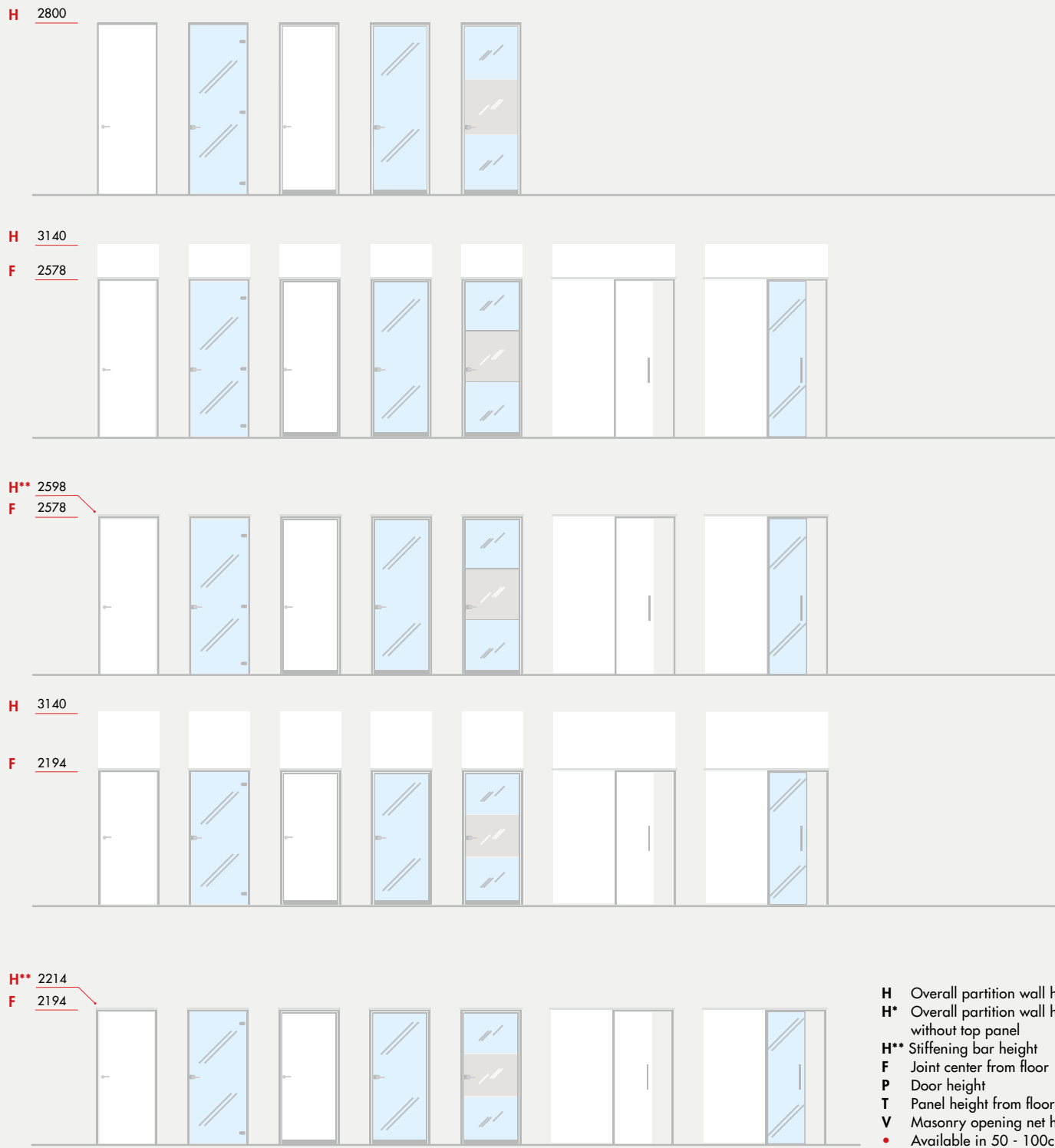


# Module configurations

PARTITION WALL MODULES 50 -100 -150 - 200cm wide



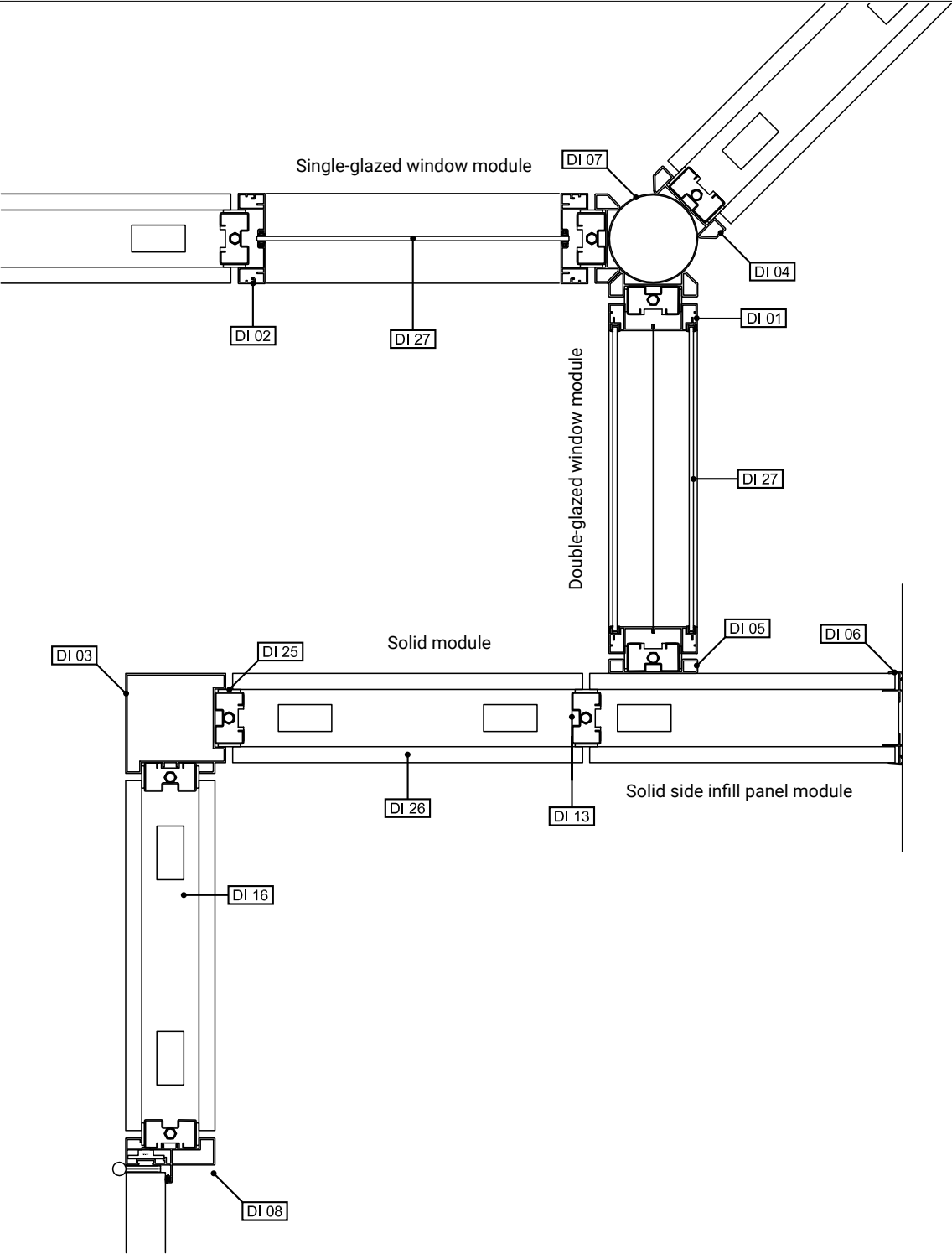
DOOR MODULES for partition wall - 100 - 200cm wide

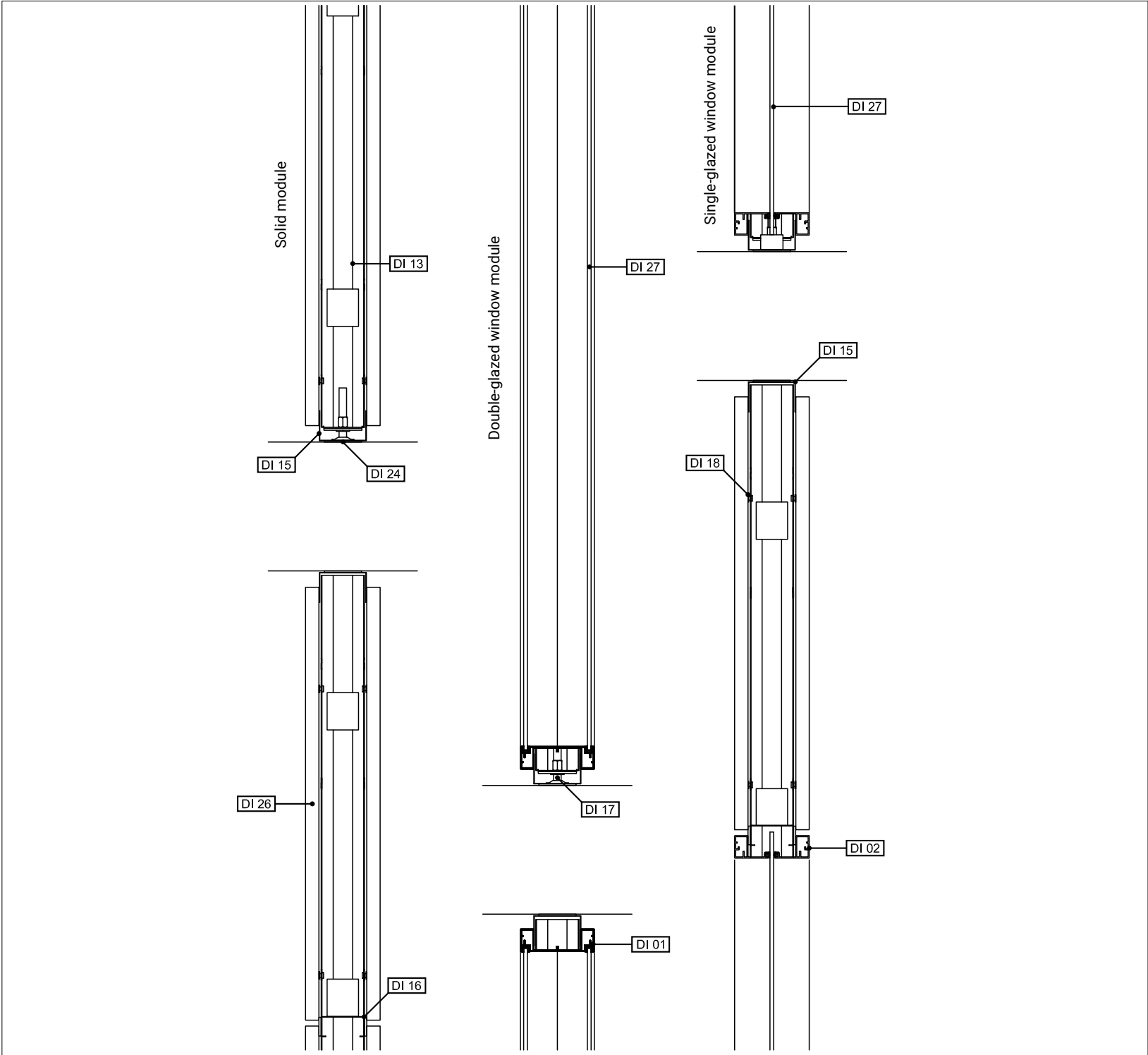


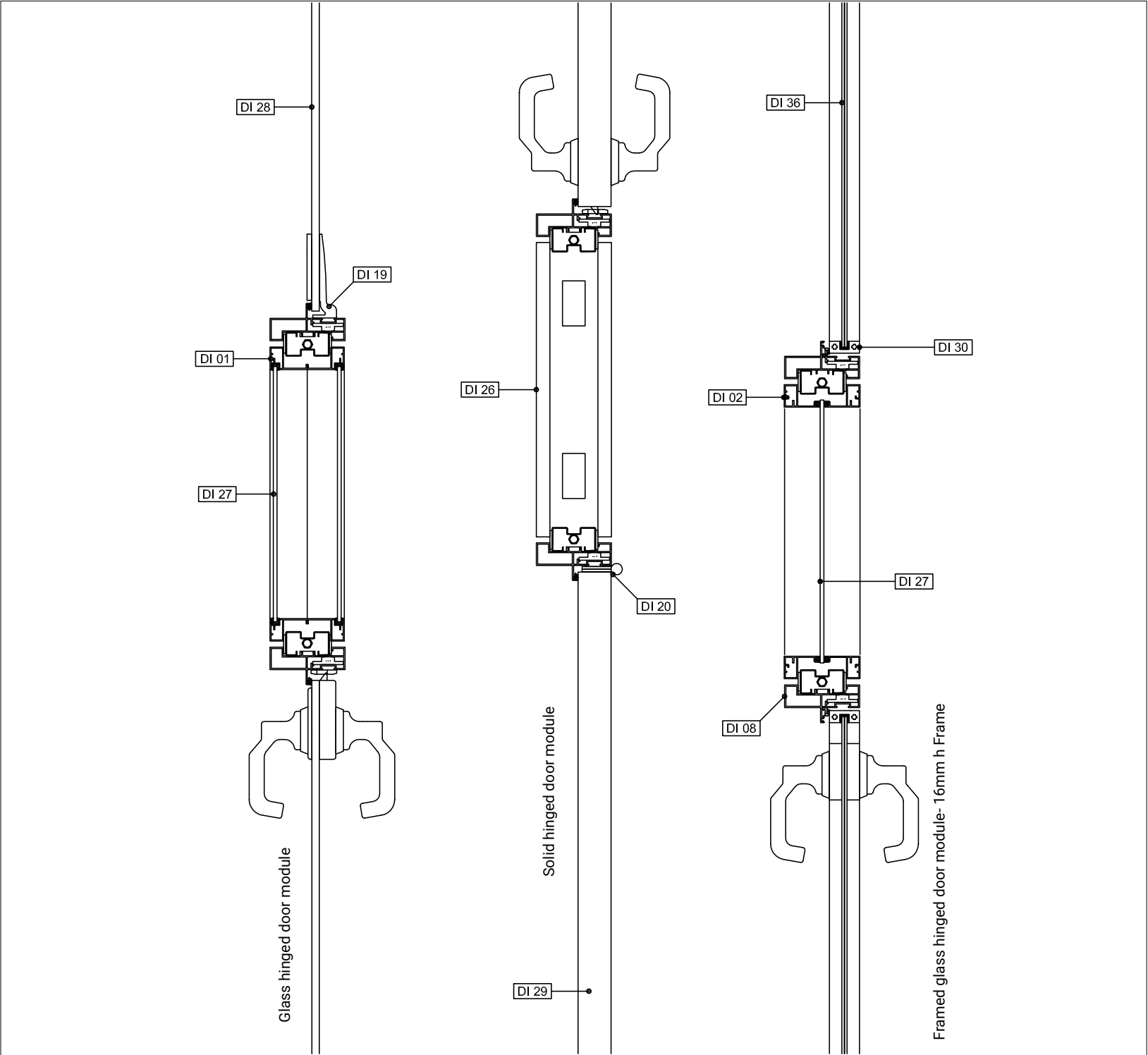


## LEGENDA

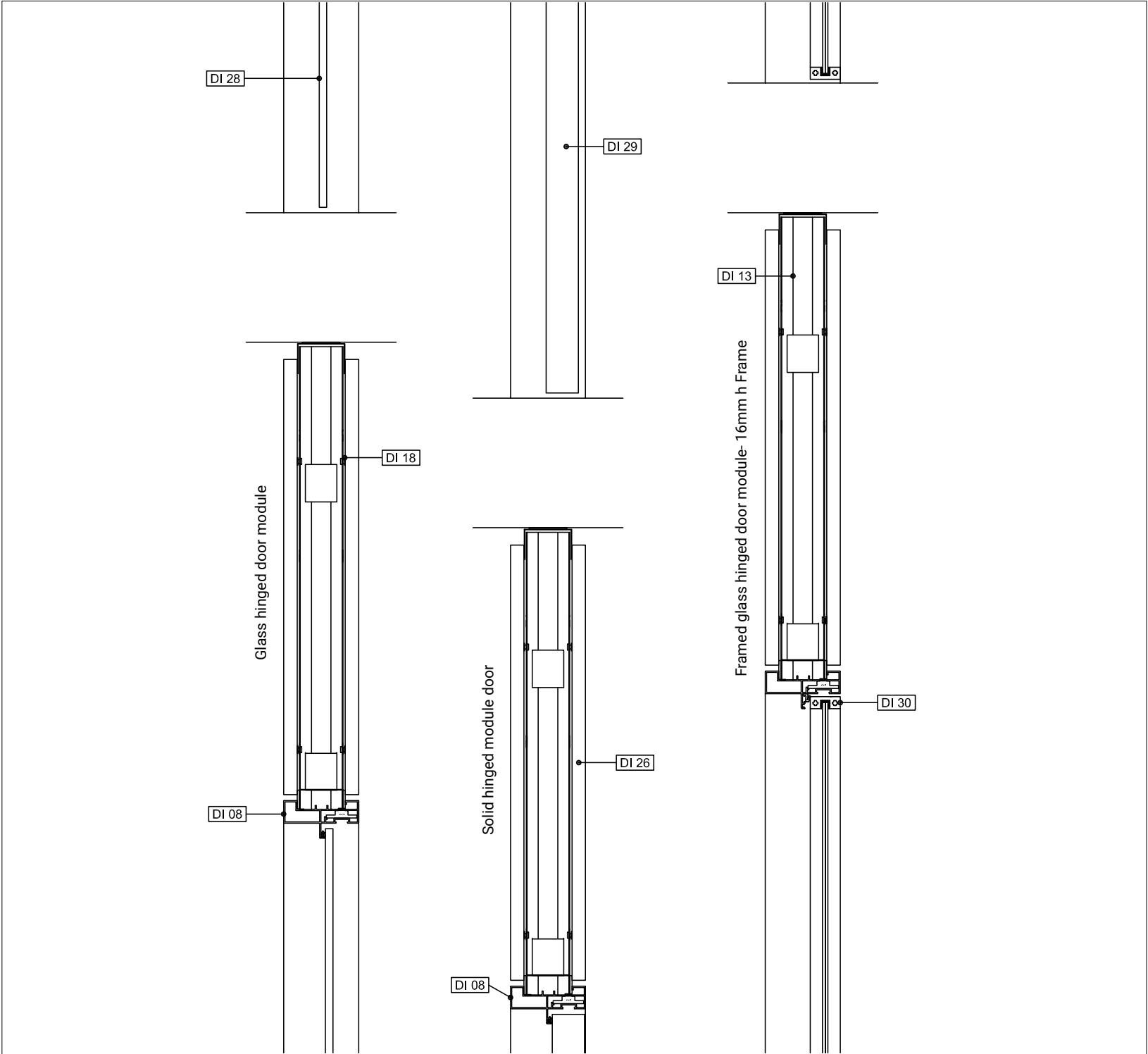
- DI 01 - Double glazed window profile
- DI 02 - Single glazed window profile
- DI 03 - 90° angle profile
- DI 04 - Variable angle profile
- DI 05 - End profile
- DI 06 - Side infill panel profile
- DI 07 - Variable angle tube profile
- DI 08 - Door jamb profile
- DI 09 - External sliding door jamb profile
- DI 10 - Pocket sliding door jamb profile
- DI 11 - Sliding door track
- DI 12 - Sliding door track cover
- DI 13 - Steel stud
- DI 14 - Steel semi-stud for pocket sliding doors
- DI 15 - Ceiling and floor perimeter track
- DI 16 - Steel crossbeam
- DI 17 - Adjusting foot
- DI 18 - Metal hooks for panels
- DI 19 - Glass door hinge
- DI 20 - Wooden door hinge
- DI 21 - Framed door hinge
- DI 22 - Glass sliding door guide
- DI 23 - Wooden sliding door guide
- DI 24 - Bi-adhesive acoustic gasket
- DI 25 - Grey mousse gasket
- DI 26 - Wooden panel 18mm thick
- DI 27 - Tempered glass sheet 5mm thick
- DI 28 - Glass hinged leaf
- DI 29 - Wooden hinged leaf
- DI 30 - Framed glass hinged leaf -16mm H frame
- DI 32 - External glass sliding door leaf
- DI 33 - External wooden sliding door leaf
- DI 34 - Glass pocket sliding door leaf
- DI 35 - Wooden pocket sliding door leaf
- DI 36 - 6mm tempered glass leaf

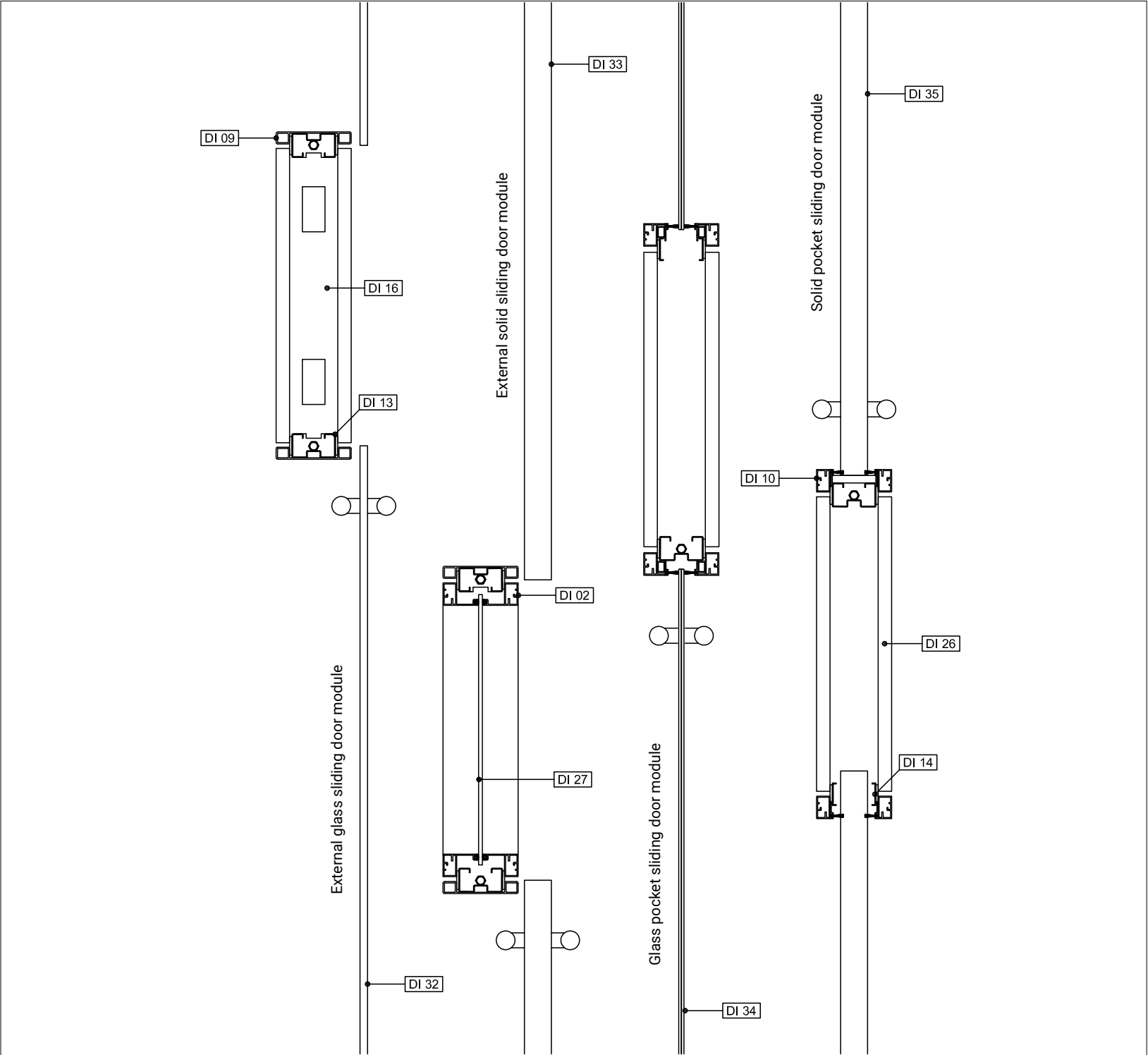


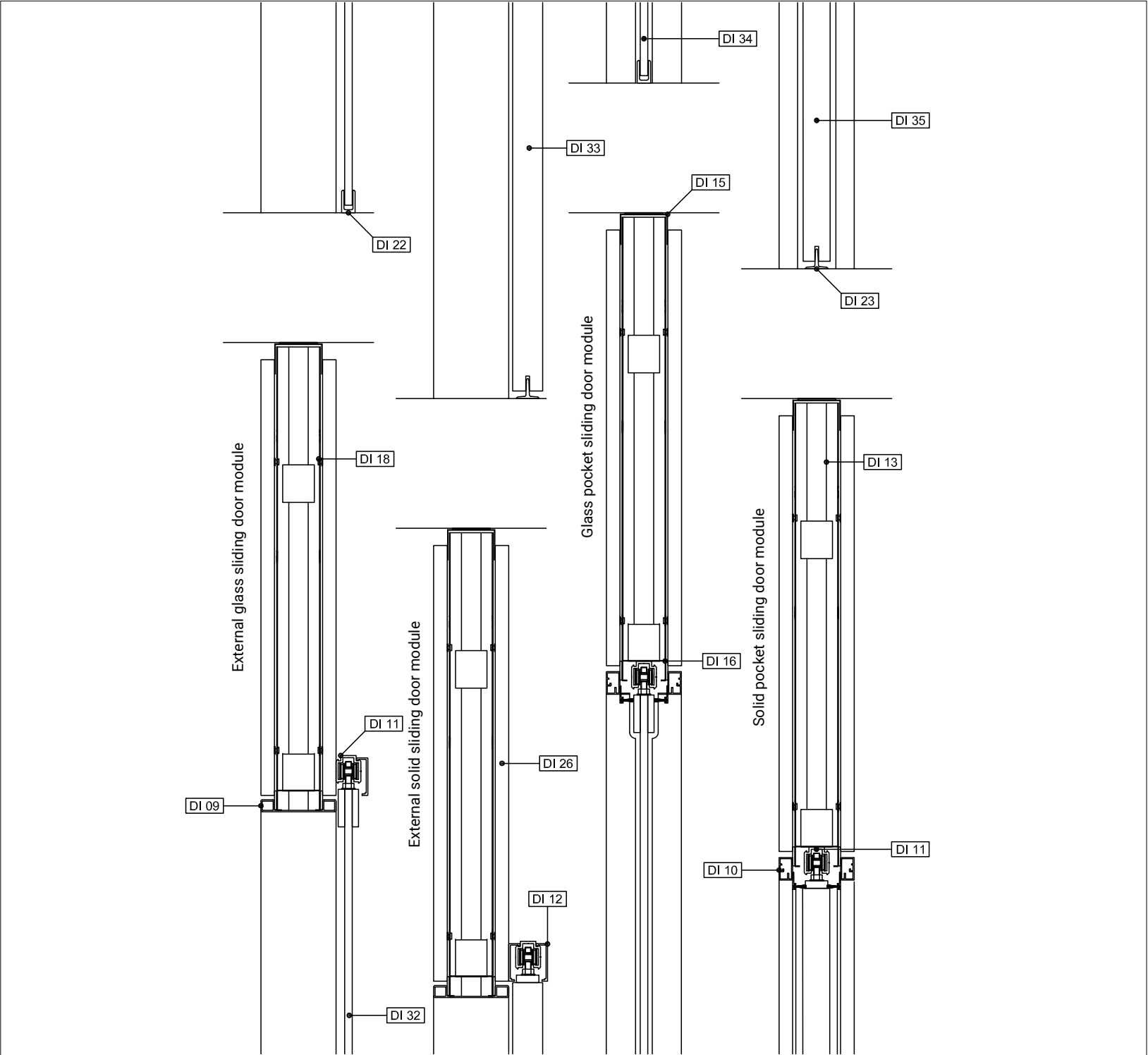














## PANEL FINISHES

---

SOLID COLORS  
WOOD EFFECT  
FABRIC EFFECT

### PANEL TYPES

1. MDF SOUNDPROOF PANEL WITH SCREENBALL MILLING
2. OPAQUE LACQUERED
3. EMBOSSSED LACQUERED
4. GLOSSY LACQUERED
5. VENEERED
6. FIRE -RATED CLASS 1 (B; S2; D0)

## ALUMINUM FINISHES

---

### STANDARD FINISHES

SERIES  
RAL- GLOSSY EFFECT  
RAL- OPAQUE EFFECT

### SPECIAL FINISHES

SATIN  
SILK  
SPARK  
WOOD  
CORTEN

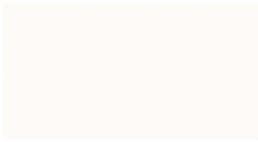
## GLASS FINISHES

---

CLEAR  
EXTRA CLEAR  
FROSTED  
LAMINATED WITH MILKY WHITE PVB  
Single-glazed windows and framed doors only  
SMOKED/BRONZE  
MANIFESTATION  
CUSTOM COLORS

# Panel Finishes

## SOLID COLORS



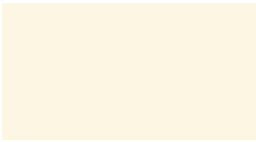
S-0002  
Bianco / White



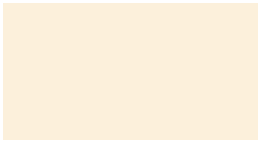
S-0001\_1  
Bianco opaco / Opaque white



M-0002\*  
Bianco lucido / Glossy white



S-0003\_1  
Avorio / Ivory



S-0208  
Cipria / Pale pink



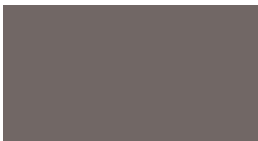
S-0207  
Sabbia / Sand



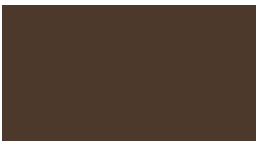
S-0020  
Tortora / Dove grey



S-0205  
Congo / Congo



S-0204  
Lava / Lava



S-0021  
Testa di moro / Dark Brown



S-0104\_1  
Giallo velvet / Velvet yellow



S-0006\_2  
Arancio / Orange



S-0007\_1  
Rosso / Red



S-0008\_1  
Rosso bordò / Bordeaux red



S-0202  
Piuma / Feather



S-0200  
Lime / Lime



S-0201  
Petrolio / Dark blue - green



S-0111  
Celeste / Sky blue



S-0012\_1  
Blue / Blue



S-0013\_2  
Grigio perla / Pearl grey

\* FINISHES WITH EXTRA CHARGES

SOLID COLORS



M-0004 \*  
Alluminio / Aluminium



S-0206  
Grigio roccia / Rock grey



S-0203  
Grigio platino / Platinum  
grey



S-0015  
Grigio antracite / Charcoal grey



S-0016  
Nero / Black



M-0003 \*  
Nero lucido / Glossy black

\* FINISHES WITH EXTRA CHARGES

# Panel Finishes

## WOOD EFFECT



M-0001\*  
Bianco venato / Veined white



M-L204\*  
Pino chiaro / Light pine



S-L203  
Pino Fano / Fano pine



S-L207  
Pino naturale / Natural pine



M-L137\_1\*  
Pino grigio / Grey pine



M-L017\*  
Old wood / Old wood



S-L139  
Acacia / Acacia



S-L034\_1  
Acero / Maple



S-L206  
Acero kiruna / Kiruna maple



M-L015\*  
Bamboo / Bamboo



S-L208  
Abete / Fir



S-L007  
Olmo / Elm



S-L101\_1  
Rovere sbiancato / Withe oak



M-L014\*  
Rovere / Oak



S-L002\_1  
Rovere rigato / Striped oak



S-L205  
Rovere Nelson / Nelson oak



S-L057\_1  
Rovere marrone / Brown oak



M-L006\*  
Rovere tranchè / Tranchè oak



S-L202  
Rovere scuro / Dark oak

\* FINISHES WITH EXTRA CHARGES



WOOD EFFECT



S-L200  
Ciliegio scandinavo /  
Scandinavian cherrywood



S-L013\_1  
Ciliegio sbiancato /  
Whitened cherrywood



S-L020\_2  
Noce scuro / Dark walnut



M-L021\_1\*  
Wengè / Wengè

FABRIC EFFECT



M-L010\*  
Tessuto chiaro / Light fabric



M-L012\*  
Tessuto kaki / Khaki fabric



M-L011\*  
Tessuto tortora /  
Charcoal fabric

\* FINISHES WITH EXTRA CHARGES

# Aluminum Finishes



## ALUMINUM

Aluminum is the most abundant metal in the Earth's crust. It represents about 8% by weight of the Earth's solid surface. It is extracted from bauxite and, being a metal, it doesn't absorb humidity. **Aluminum immediately oxidizes when in contact with air and forms a surface protection that makes it impermeable to water and resistant to some chemical substances.**

Light, strong and resistant by nature, it is the main ingredient in the manufacturing of numberless kinds of products. Aluminum, be it raw or lacquered, is **eco-friendly** and does not require any special kind of maintenance.

Thanks to its intrinsic properties and versatility, aluminum is particularly used in the technical furnishing sector (offices, shops, public places), including demountable glass and solid partitions, dividing walls and storage partitions.

Aluminum can be anodized, lacquered in millions of colors with the most varied finish effects to satisfy even the most demanding designers!

**Our range includes finishes that can be anodized, opaque, glossy, extra glossy, metallized, textured, wood and Corten steel effects.**

**SERIES and RAL**



A-A001  
Silver Anodized



A-A007  
Steel Anodized



A-A004  
Bronze Anodized



A-A006  
Black Anodized



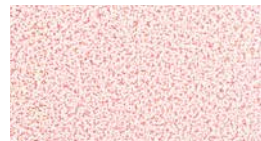
A-B001  
Steel



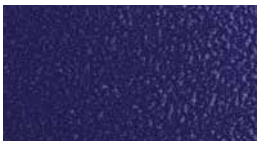
A-B002  
Iron



A-0001  
Yellow Bump



A-0002  
Pink Bump



A-0009  
Blue Bump



A-B003  
White



A-B004  
Black Grinz

**RAL PAINT COLORS**

GLOSSY Effect  
OPAQUE Effect



**ANODIZED** - Anodized aluminum is pretreated with anodization, a process that creates a layer of artificial oxide on the metal. In substance, oxide covers the aluminum surface making it more weather resistant and not only.

**BUMP** - It's a rough finish with a "hammered" look which creates different light and dark nuances of the color applied.

**PAINTED** - Aluminum naturally forms a thin layer of aluminum oxide on its surface that turns to be a perfect substrate for the paint to adhere and be easily removed. Lots of glossy and opaque colors at the same price chosen from the RAL color chart. RAL is a European color matching system used to define colors for paint, coatings and plastics.

# Aluminum Finishes

SPARK



A-L001 \*  
Silver



A-L002 \*  
Cobalt



A-L003 \*  
Gunmetal Grey



A-L004 \*  
Pyrite



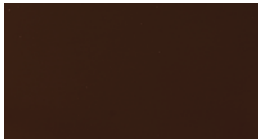
A-L005 \*  
Lime



A-L006 \*  
Coral



A-L007 \*  
Red



A-L008 \*  
Garnet Red



A-L009 \*  
Jade



A-L010 \*  
Night Blue



A-L011 \*  
Black

SPARK- GLOSSY ANODIZED  
A glossy effect that enhances the bright anodized finish.

\* FINISHES WITH EXTRA CHARGES

SATIN



A-T001 \*  
Silver



A-T002 \*  
Gold



A-T003 \*  
Gunmetal Grey



A-T004 \*  
Pyrite



A-T005 \*  
Lime



A-T006 \*  
Coral



A-T007 \*  
Red



A-T008 \*  
Garnet Red



A-T009 \*  
Jade



A-T010 \*  
Night Blue



A-T011 \*  
Black

SATIN- BRUSHED ANODIZED  
A completely new elegant and fine scratch effect of anodized aluminum.

\* FINISHES WITH EXTRA CHARGES

# Aluminum Finishes

SILK



A-S001 \*  
Silver



A-S002 \*  
Gold



A-S003 \*  
Gunmetal Grey



A-S004 \*  
Pyrite



A-S005 \*  
Lime



A-S006 \*  
Coral



A-S007 \*  
Red



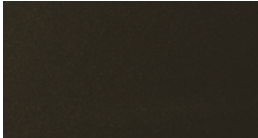
A-S008 \*  
Garnet Red



A-S009 \*  
Jade



A-S010 \*  
Night Blue



A-S011 \*  
Black

SILK - VELVET TOUCH ANODIZED  
It's a prestigious smooth velvet effect of the anodized aluminum that wins at the very first touch.

\* FINISHES WITH EXTRA CHARGES

WOOD



A-LG15 \*  
Cherrywood 35



A-LG25 \*  
Oak 25



A-LG11 \*  
Larch 11



A-LG43 \*  
Walnut 43



A-LG21 \*  
Wengé 11



A-LG32 \*  
Rosewood 32



A-LG31 \*  
Pine 31



A-LG44 \*  
Oak 44



A-LG24 \*  
White 24

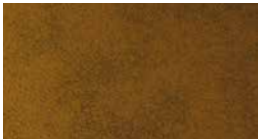
WOOD - SUBLIMATION WOOD EFFECT

This type of finish gives aluminum an aesthetic look very similar to wood. It's a complex process called sublimation that repeats colors and veins of natural wood essences. Painted metal profiles are wrapped in a pre-printed film and put under vacuum. Profiles are then placed into a high-temperature furnace where the pattern printed on the film is transferred onto the metal surface.

\* FINISHES WITH EXTRA CHARGES

# Aluminum Finishes

## CORTEN



A-C001 \*  
Rust



A-C002 \*  
Bronze



A-C003 \*  
Brass



A-C004 \*  
Oxidized



A-C005 \*  
Steel

---

### CORTEN STEEL EFFECT

This finish confers the look of real natural Corten steel on profiles. Its peculiarity is its natural oxidation when in contact with air. Once oxidation has occurred it stops and forms a protective layer that doesn't vary over time.

\* FINISHES WITH EXTRA CHARGES

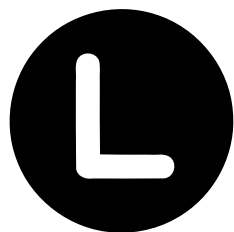




IN ORDER TO CONSTANTLY IMPROVE ITS PRODUCTS, THE COMPANY RESERVES THE RIGHT TO MODIFY ITS PRODUCTS AS IT SEES FIT, WITHOUT PRIOR NOTIFICATION. BECAUSE OF THE TECHNICAL LIMITS OF PRINTING AND REPRODUCTION, THE COLOURS OF THE MODELS IN THE CATALOGUE ARE PURELY INDICATIVE AND CAN NOT BE CLAIMED AS REASON FOR COMPENSATION AND LEGAL ACTION.

---

September 2021



**LINE**  
**OFFICE**

---

**LINE OFFICE** UNIPERSONALE SRL  
VIA AGOSTINO NOVELLA, 24  
61022 TALACCHIO DI VALLEFOGLIA PU  
TEL. +39 0721 479441  
**info@lineoffice.eu - [www.lineoffice.eu](http://www.lineoffice.eu)**





**LINE  
OFFICE**

**LINE OFFICE** UNIPERSONALE SRL  
VIA AGOSTINO NOVELLA, 24  
61022 TALACCHIO DI VALLEFOGLIA PU  
TEL. +39 0721 479441  
[info@lineoffice.eu](mailto:info@lineoffice.eu) - [www.lineoffice.eu](http://www.lineoffice.eu)