

Iris

STORAGE
PARTITION WALL
SYSTEM



LINE
OFFICE

STRUCTURE AND TECHNICAL DATA

TECHNICAL FEATURES	4
TYPES OF STORAGE PARTITION WALLS	8
TYPES OF STORAGE PARTITION WALLS	10
ACCESSORIES AND HANDLES	11
TECHNICAL CERTIFICATIONS	14
MODULE CONFIGURATIONS AND TECHNICAL DATA	15
STRUCTURAL COMPONENTS	19

FINISHES

AVAILABLE FINISHES.....	25
-------------------------	----

PANEL FINISHES

SOLID COLORS	26
WOOD EFFECT	28
FABRIC EFFECT	29

ALUMINUM FINISHES

SERIES E RAL	31
SPARK.....	32
SATIN	33
SILK.....	34
WOOD.....	35
CORTEN	36

Technical features



IRIS is a demountable "single-side" storage partition wall with a thickness of 462mm. It follows the same static and structural operating principle as the partition wall. It offers floor-to-ceiling storage, and the compartment interiors are equipped with metal shelves fastened to the sides. IRIS design guarantees maximum flexibility over the time thanks to its modules in different widths and heights to suit any project requirements.

STRUCTURE

The loadbearing structure of each partition components is made up of:

structural sides and dividers in anti-scratch and anti-stain melamine-faced wooden agglomerate, 22 mm thick, and edging on all sides in contact with leaves and back panels; grey double-intensity **PVC gaskets** to increase acoustic insulation and dust prevention;

horizontal crossbeams (floor and ceiling), 22mm thick in wooden agglomerate and in low formaldehyde emission Class E1.

Floor and ceiling tracks, 40x20mm in grey L-shaped epoxy powder painted metal sheet 8/10 thick. The assembly of the components is carried out with the use of pins and eccentric gaskets that allow the interchangeability between both sides of door leaves and back panels. 2 feet are mounted

on each side and allow adjustment of maximum 20mm. **Structure finishes:** white or aluminum grey.

PARTITION WALL THICKNESS: 462mm .

PANELS

Partition wall panels, back panels, leaves and end side infill panels are anti-scratch and anti-reflective, independent and individually demountable to allow inspection and replacements without moving other partition sections.

Joints, i.e. the spacings between the panels, are 8mm wide without covering profiles for easy disassembly and the re-assembly operations. These panels are in melamine covered wooden agglomerate, minimum 18mm thick, in lowest formaldehyde emission Class E1 with white or grey perimeter edging in 6/10 ABS.

SOLID OR GLASS LEAVES

Solid or glass hinged leaves (with or without aluminum framing) are equipped with 110° or 180° hinges upon request, latch locks, knobs in satined aluminum mounted on the main leaves only.

SHELVES

Mobile shelves for file-folders, freely positionable inside the compartments, 40cm wide and in press bended and shaped steel sheet, 8/10 thick, epoxy powder painted in the same color as the internal cabinet surfaces.

The evenly distributed load on each shelf can be maximum 60kg. The supports, 4 for each shelf, are in nickel-plated zinc, and rated to support the maximum permissible weight. Cable passing holes can be horizontal or vertical along all partition walls which are so preset for electrical installations, telephone systems, computer systems, etc..

DOORS

The partition wall also includes wooden and glass hinged doors (frameless or with aluminum perimeter frame).

WOODEN HINGED

Single/Double Leaf

GLASS HINGED

Single/Double Leaf

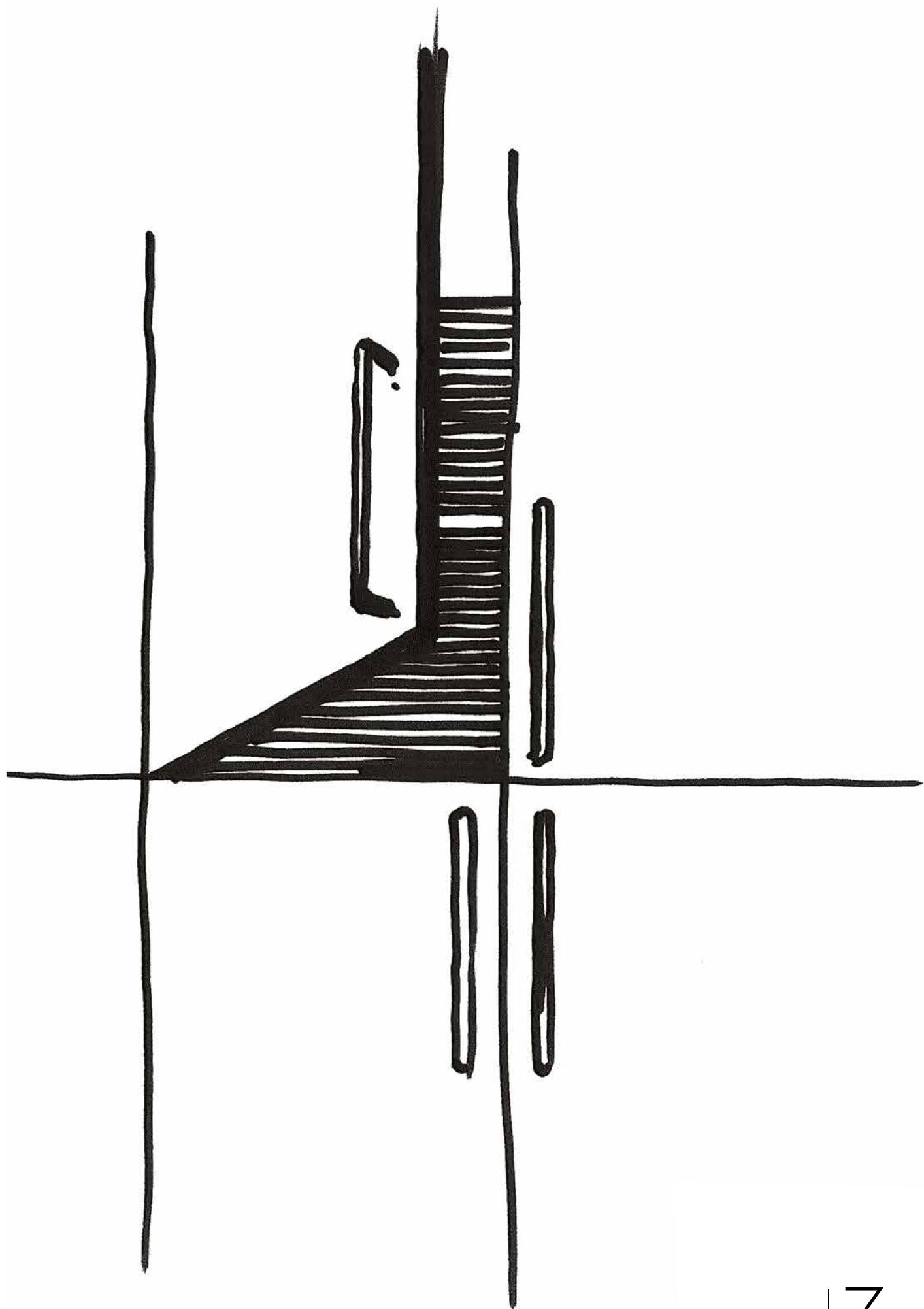
Door frame in extruded aluminum profile with grey rebate gasket.

Hollow-core **wooden leaves**, 43mm thick with 10/10 ABS edging.

Handles of a choice from the catalogue.

Tempered clear **glass leaves**, 8-10mm thick, with aluminum hinges.

Handles of a choice from the catalogue.



Types of storage partition walls



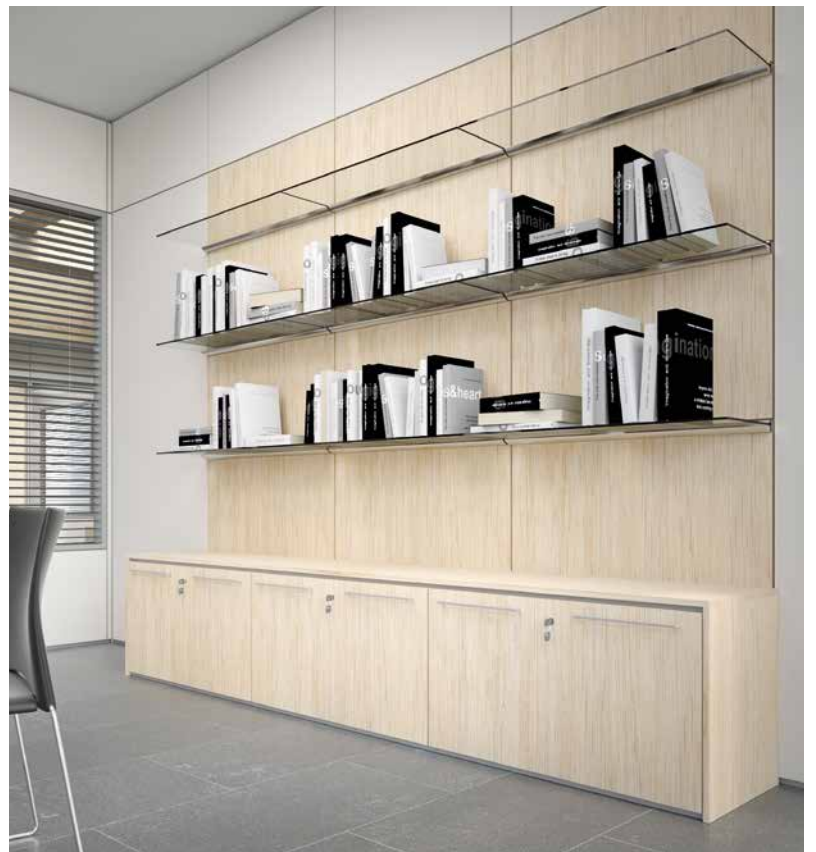
Open compartments



Wooden door leaves



Framed glass door leaves



Open shelving



Push pull doors



Asymetric door leaves

Cabinet door knobs and handles



KNOB with ratchet lock



VERTICAL HANDLE -256mm centre spaced
with ratchet lock



PUSH PULL doors



HORIZONTAL HANDLE
320mm centre spaced with ratchet lock

Accessories



TOUCH ON-UP Button



SNAP-IN IP67 Button

Hinged door handles

WOODEN HINGED DOORS



ARLES



PARIS



GENEVE



TOULON



AMSTERDAM

PANIC BAR HANDLES AVAILABLE FOR ALL TYPES OF HINGED DOORS

FRAMELESS GLASS HINGED DOORS



ARLES



PARIS



GENEVE



TOULON



AMSTERDAM

Certifications

SAMPLE	STANDARD NUMBER	TITLE	TEST LEVEL ATTAINED
LAYING SURFACE	UNI 8600:2005	Storage units. Flexure test with concentrated load.	5
THIRD SHELF FROM THE TOP	UNI 8601:1984	Storage units. Shelf flexure test.	4
CABINET DOOR WITH HINGES ON THE VERTICAL AXIS	UNI 8602:2005	Storage units. Door opening/closing and slam test.	5
THIRD SHELF FROM THE TOP	UNI 8603:2005	Storage units. Resistance test of laying surface supports.	5
LEFT-HANDED LEAF	UNI 8606:1984	Storage units. Test with maximum total load.	5
LEFT-HANDED LEAF	UNI 8607:2005	Storage units. Door endurance test.	5

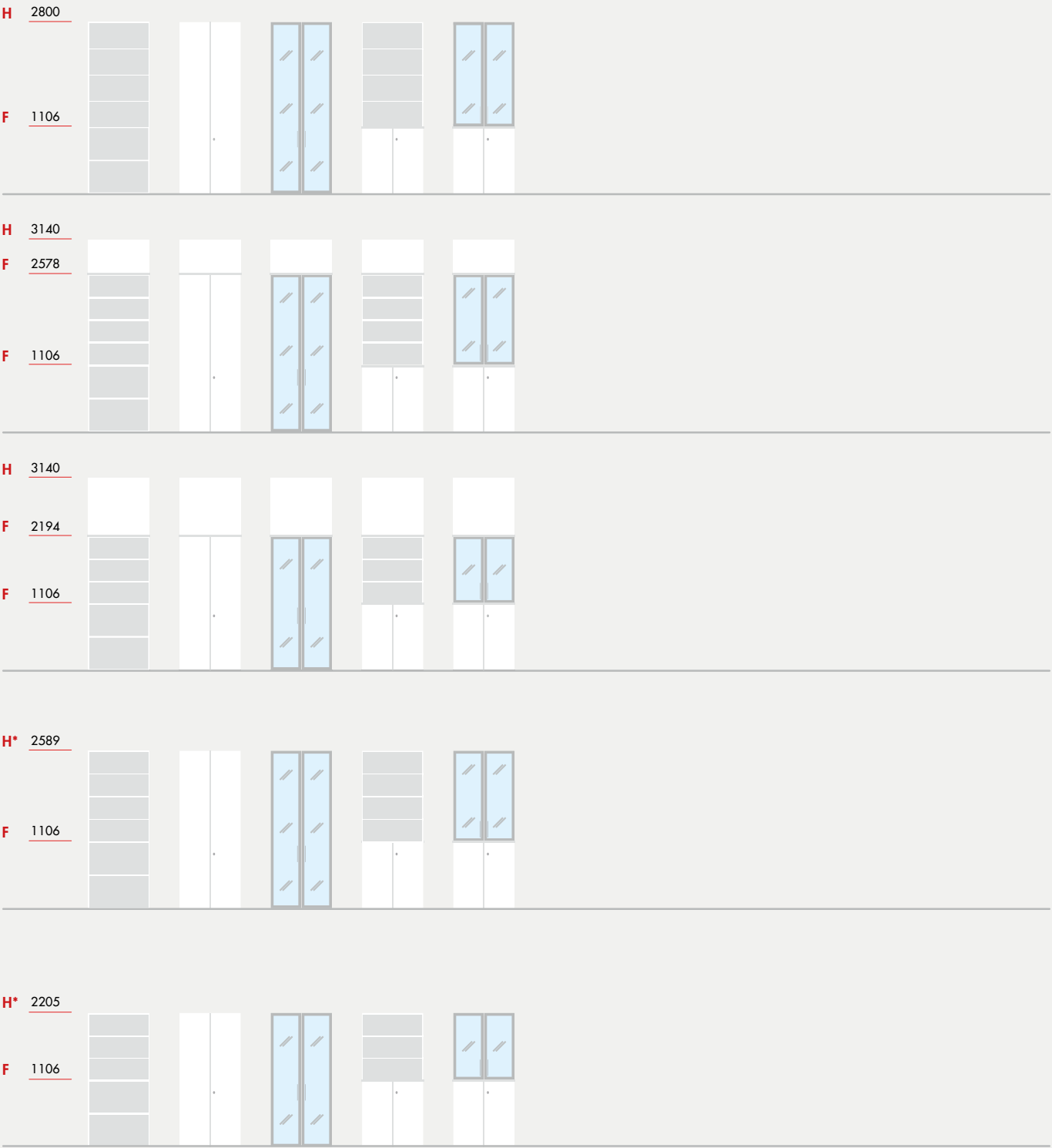
Module configurations

DOOR MODULES for storage partition wall - 100 - 200cm wide

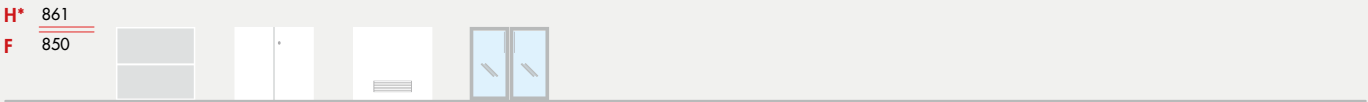
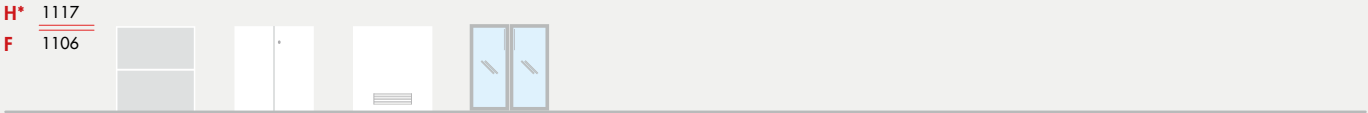


Module configurations

STORAGE PARTITON WALL MODULES 50 -100cm wide



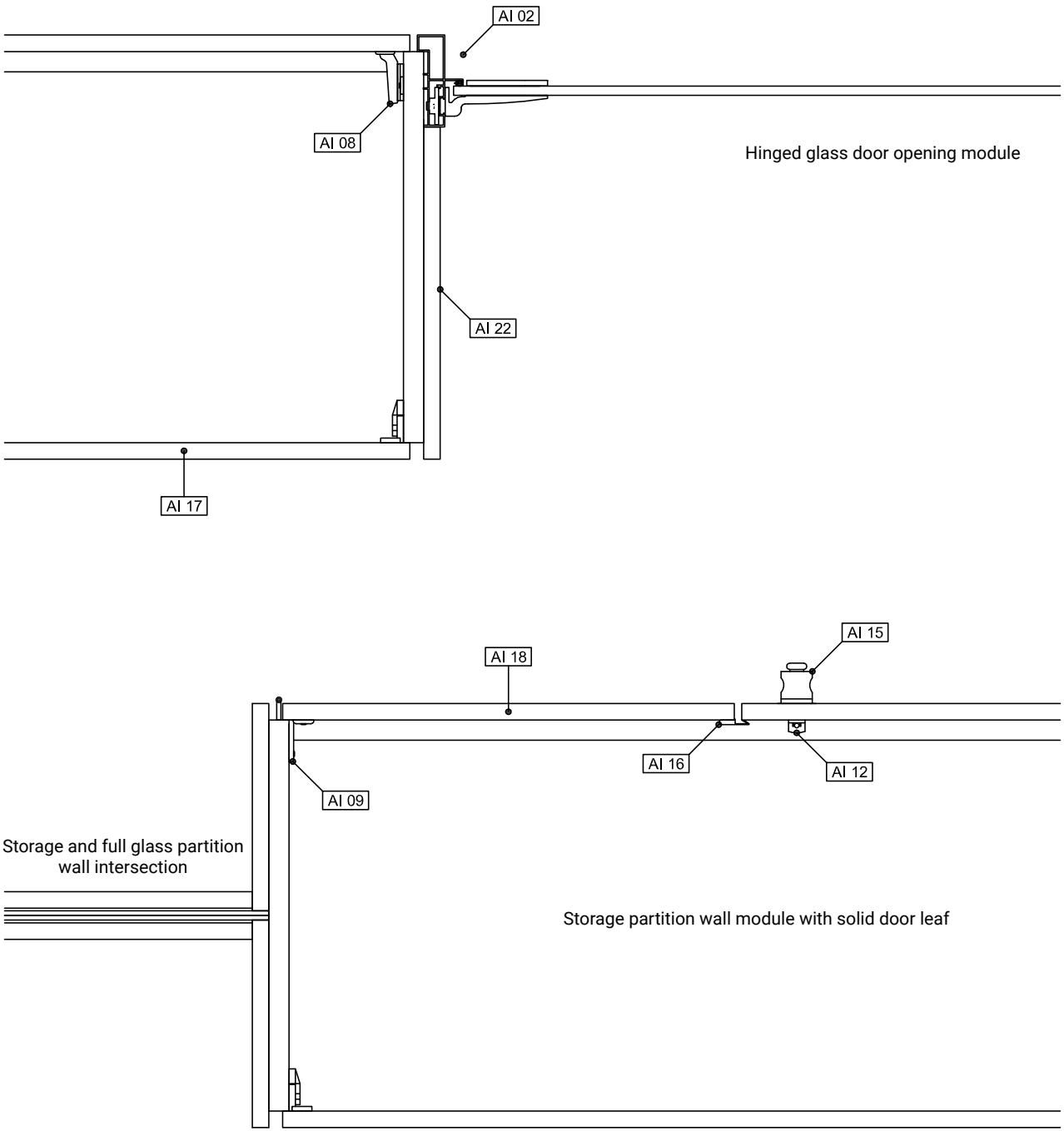
STORAGE PARTITON WALL MODULES - 50 - 100cm wide

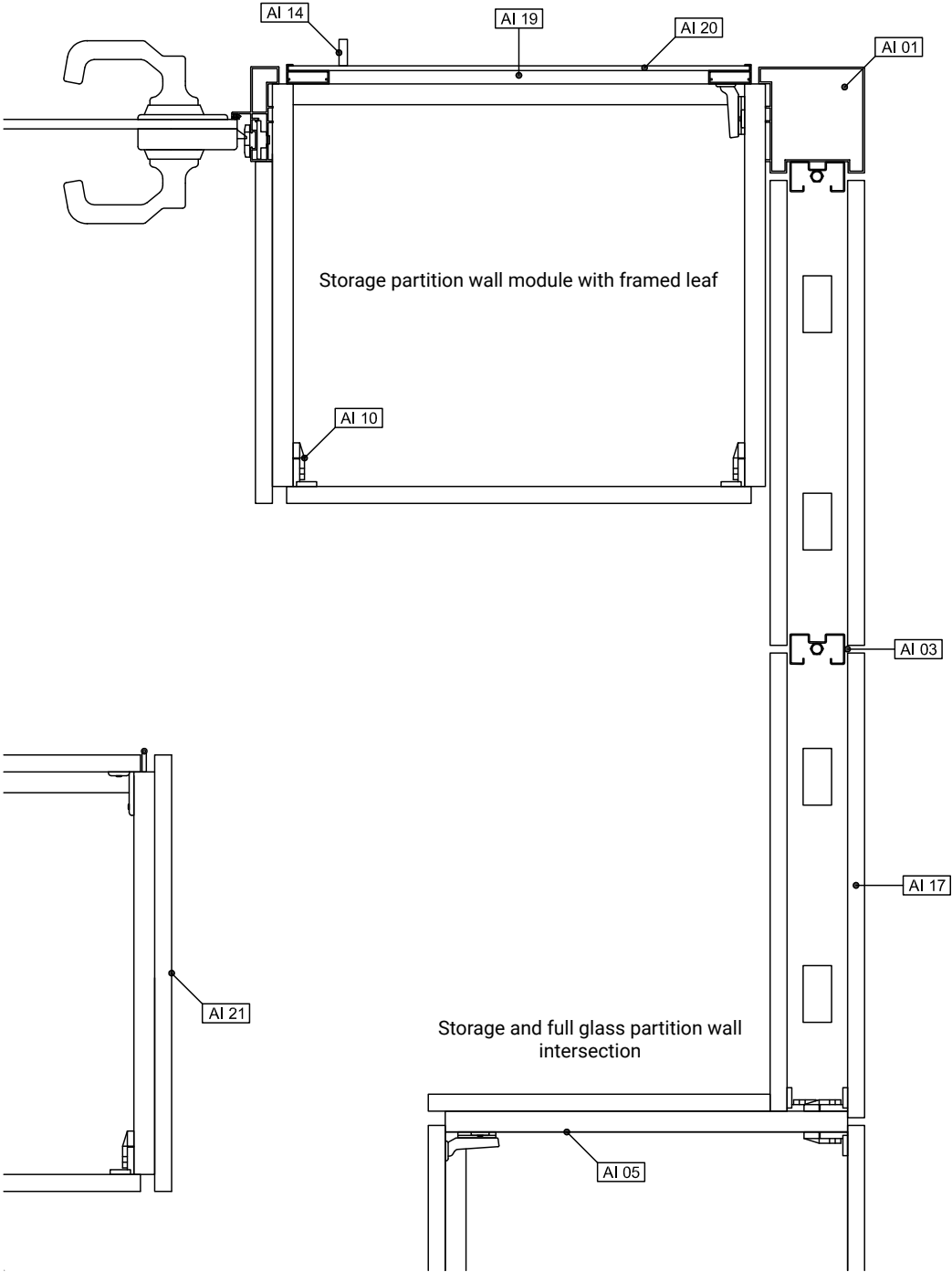


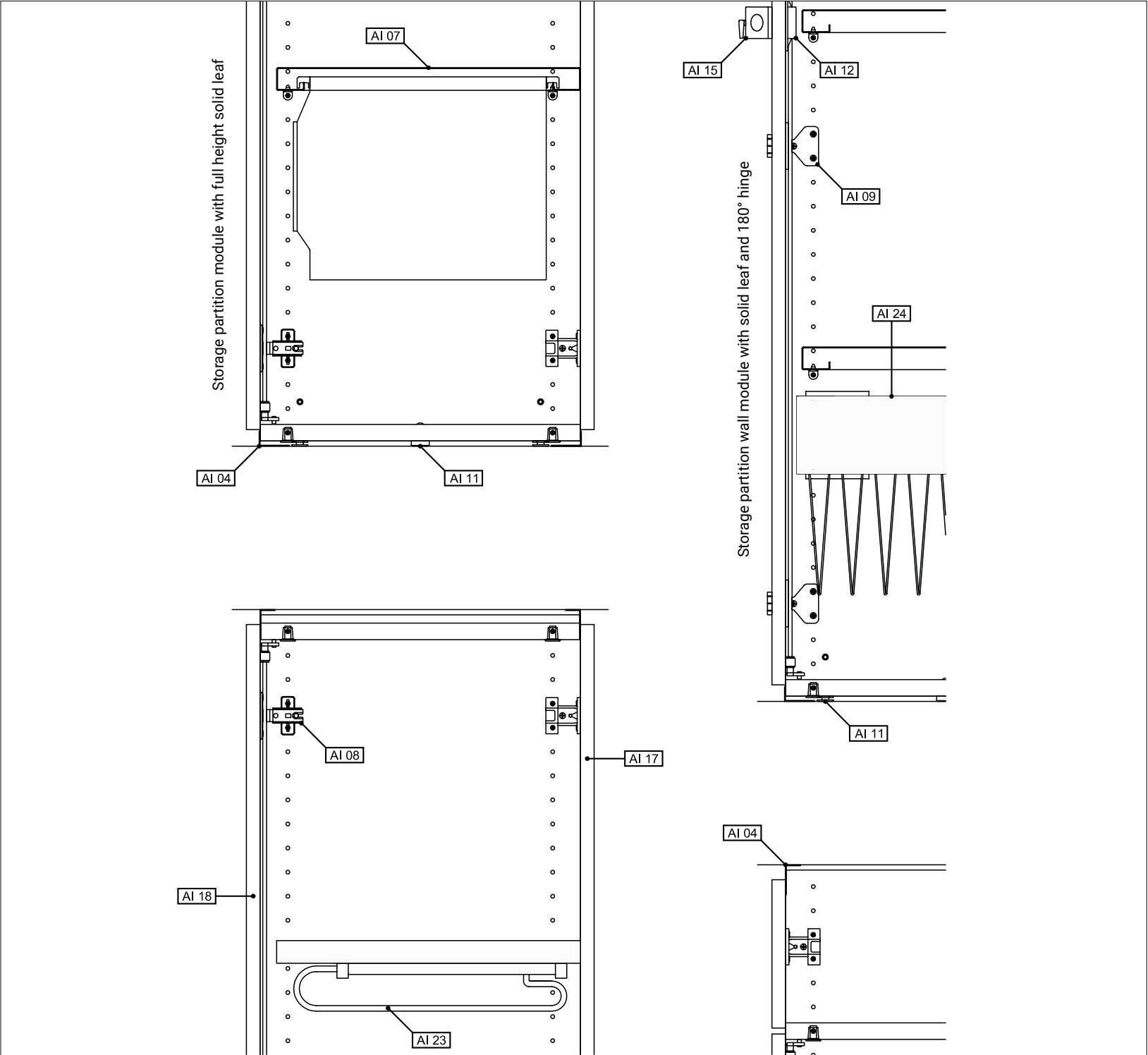
- H** Overall partition wall height
- H*** Overall partition wall height without top panel
- F** Joint center from floor
- P** Door height
- T** Panel height from floor
- V** Masonry opening net height

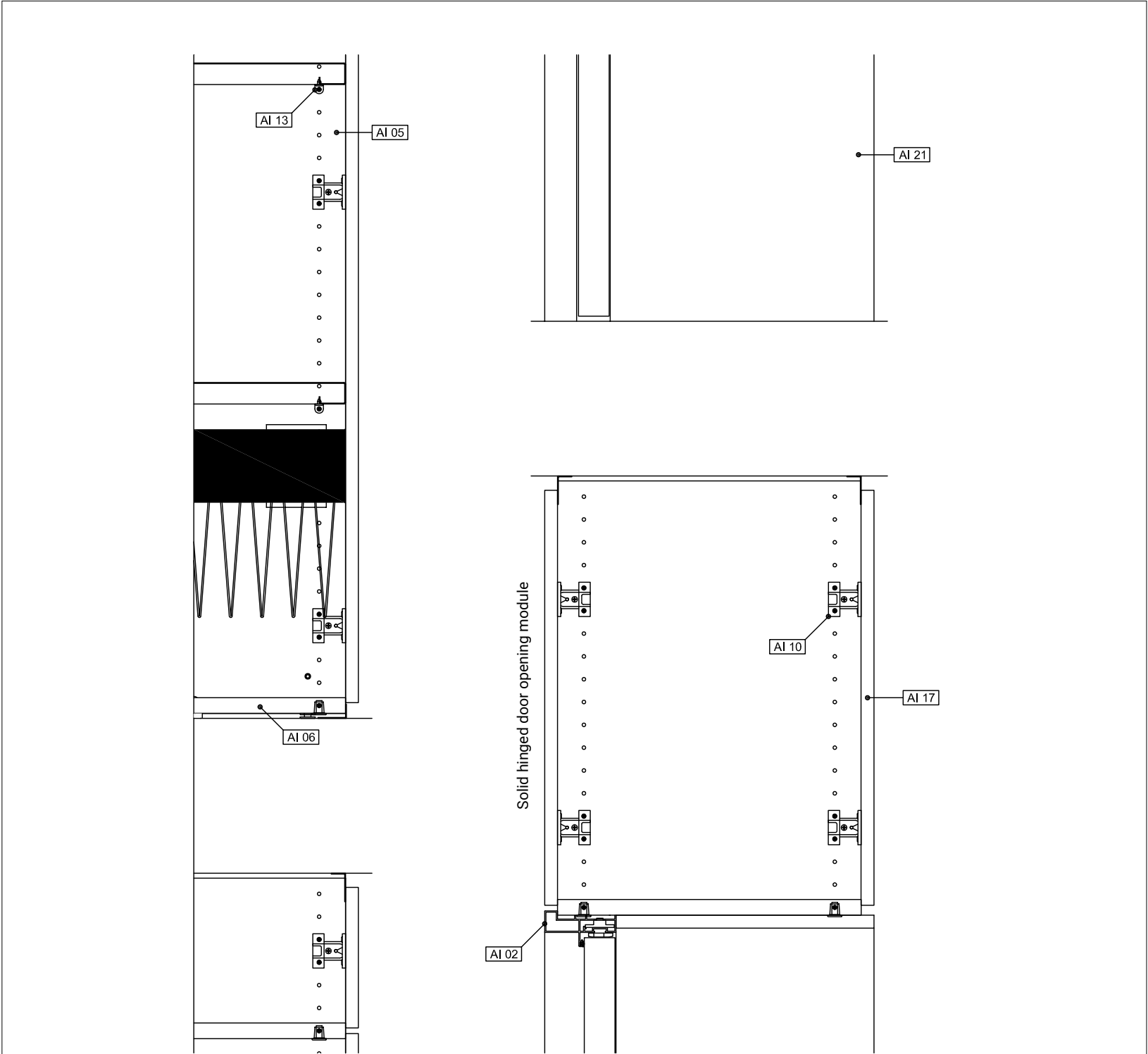
LEGENDA

- Al 01 - 90° Aluminum angle profile
- Al 02 - Door jamb
- Al 03 - Steel stud
- Al 04 - Top and bottom track
- Al 05 - 22mm thick structural side panel
- Al 06 - 22mm horizontal structural beam
- Al 07 - Metal folder-holder shelf
- Al 08 - 110° Hinge
- Al 09 - 180° Hinge
- Al 10 - Back panel hook
- Al 11 - Adjusting foot
- Al 12 - Ratchet lock
- Al 13 - Metal shelf
- Al 14 - Metal handle
- Al 15 - Knob with lock
- Al 16 - Leaf rebate
- Al 17 - 18mm thick solid panel
- Al 18 - 18mm thick wooden leaf
- Al 19 - Framed glass leaf
- Al 20 - 4mm thick tempered glass sheet
- Al 21 - Aluminum-framed side panel
- Al 22 - Side panel
- Al 23 - Pull-out clothes hanger rail
- Al 24 - Pull-out filer









PANEL FINISHES

SOLID COLORS
WOOD EFFECT
FABRIC EFFECT

PANEL TYPES

1. MDF SOUNDPROOF PANEL WITH SCREENBALL MILLING
2. OPAQUE LACQUERED
3. EMBOSSSED LACQUERED
4. GLOSSY LACQUERED
5. VENEERED
6. FIRE -RATED CLASS 1 (B; S2; D0)

ALUMINUM FINISHES

STANDARD FINISHES

SERIES
RAL- GLOSSY EFFECT
RAL- OPAQUE EFFECT

SPECIAL FINISHES

SATIN
SILK
SPARK
WOOD
CORTEN

WALL PARTITION INTERNAL FINISHES

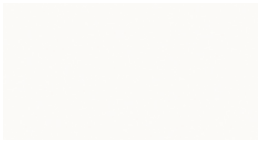
WHITE
ALUMINUM GREY
structure finishes also available in the same colors
as leaves and back panels (wooden shelves only)

GLASS FINISHES

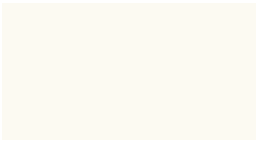
CLEAR
EXTRA CLEAR
FROSTED
LAMINATED WITH MILKY WHITE PVB
Single-glazed windows and framed doors only
SMOKED/BRONZE
MANIFESTATION
CUSTOM COLORS

Panel Finishes

SOLID COLORS



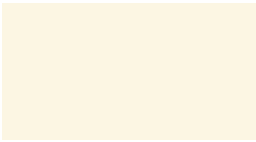
S-0002
Bianco / White



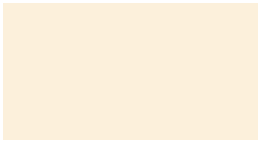
S-0001_1
Bianco opaco / Opaque white



M-0002*
Bianco lucido / Glossy white



S-0003_1
Avorio / Ivory



S-0208
Cipria / Pale pink



S-0207
Sabbia / Sand



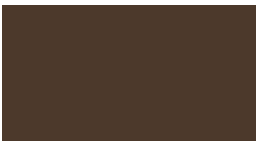
S-0020
Tortora / Dove grey



S-0205
Congo / Congo



S-0204
Lava / Lava



S-0021
Testa di moro / Dark Brown



S-0104_1
Giallo velvet / Velvet yellow



S-0006_2
Arancio / Orange



S-0007_1
Rosso / Red



S-0008_1
Rosso bordò / Bordeaux red



S-0202
Piuma / Feather



S-0200
Lime / Lime



S-0201
Petrolio / Dark blue - green



S-0111
Celeste / Sky blue



S-0012_1
Blue / Blue



S-0013_2
Grigio perla / Pearl grey

* FINISHES WITH EXTRA CHARGES

SOLID COLORS



M-0004*
Alluminio / Aluminium



S-0206
Grigio roccia / Rock grey



S-0203
Grigio platino / Platinum
grey



S-0015
Grigio antracite / Charcoal grey



S-0016
Nero / Black



M-0003*
Nero lucido / Glossy black

* FINISHES WITH EXTRA CHARGES

Panel Finishes

WOOD EFFECT



M-0001*
Bianco venato / Veined white



M-L204*
Pino chiaro / Light pine



S-L203
Pino Fano / Fano pine



S-L207
Pino naturale / Natural pine



M-L137_1*
Pino grigio / Grey pine



M-L017*
Old wood / Old wood



S-L139
Acacia / Acacia



S-L034_1
Acero / Maple



S-L206
Acero kiruna / Kiruna maple



M-L015*
Bamboo / Bamboo



S-L208
Abete / Fir



S-L007
Olmo / Elm



S-L101_1
Rovere sbiancato / Withe oak



M-L014*
Rovere / Oak



S-L002_1
Rovere rigato / Striped oak



S-L205
Rovere Nelson / Nelson oak



S-L057_1
Rovere marrone / Brown oak



M-L006*
Rovere tranchè / Tranchè oak



S-L202
Rovere scuro / Dark oak

* FINISHES WITH EXTRA CHARGES

WOOD EFFECT



S-L200
Ciliegio scandinavo /
Scandinavian cherrywood



S-L013_1
Ciliegio sbiancato /
Whitened cherrywood



S-L020_2
Noce scuro / Dark walnut



M-L021_1*
Wengè / Wengè

FABRIC EFFECT



M-L010*
Tessuto chiaro / Light fabric



M-L012*
Tessuto kaki / Khaki fabric



M-L011*
Tessuto tortora /
Charcoal fabric

* FINISHES WITH EXTRA CHARGES

Aluminum Finishes



ALUMINUM

Aluminum is the most abundant metal in the Earth's crust. It represents about 8% by weight of the Earth's solid surface. It is extracted from bauxite and, being a metal, it doesn't absorb humidity. **Aluminum immediately oxidizes when in contact with air and forms a surface protection that makes it impermeable to water and resistant to some chemical substances.**

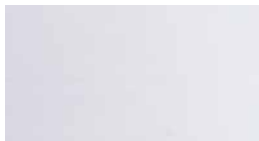
Light, strong and resistant by nature, it is the main ingredient in the manufacturing of numberless kinds of products. Aluminum, be it raw or lacquered, is **eco-friendly** and does not require any special kind of maintenance.

Thanks to its intrinsic properties and versatility, aluminum is particularly used in the technical furnishing sector (offices, shops, public places), including demountable glass and solid partitions, dividing walls and storage partitions.

Aluminum can be anodized, lacquered in millions of colors with the most varied finish effects to satisfy even the most demanding designers!

Our range includes finishes that can be anodized, opaque, glossy, extra glossy, metallized, textured, wood and Corten steel effects.

SERIES and RAL



A-A001
Silver Anodized



A-A007
Steel Anodized



A-A004
Bronze Anodized



A-A006
Black Anodized



A-B001
Steel



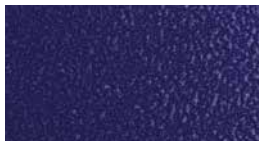
A-B002
Iron



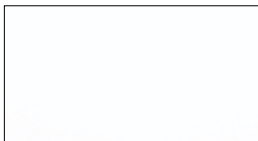
A-0001
Yellow Bump



A-0002
Pink Bump



A-0009
Blue Bump



A-B003
White



A-B004
Black Grinz

RAL PAINT COLORS

GLOSSY Effect

OPAQUE Effect



ANODIZED - Anodized aluminum is pretreated with anodization, a process that creates a layer of artificial oxide on the metal. In substance, oxide covers the aluminum surface making it more weather resistant and not only.

BUMP - It's a rough finish with a "hammered" look which creates different light and dark nuances of the color applied.

PAINTED - Aluminum naturally forms a thin layer of aluminum oxide on its surface that turns to be a perfect substrate for the paint to adhere and be easily removed. Lots of glossy and opaque colors at the same price chosen from the RAL color chart. RAL is a European color matching system used to define colors for paint, coatings and plastics.

* FINISHES WITH EXTRA CHARGES

Aluminum Finishes

SPARK



A-L001 *
Silver



A-L002 *
Cobalt



A-L003 *
Gunmetal Grey



A-L004 *
Pyrite



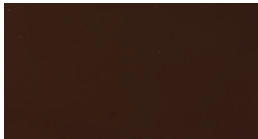
A-L005 *
Lime



A-L006 *
Coral



A-L007 *
Red



A-L008 *
Garnet Red



A-L009 *
Jade



A-L010 *
Night Blue



A-L011 *
Black

SPARK- GLOSSY ANODIZED
A glossy effect that enhances the bright anodized finish.

* FINISHES WITH EXTRA CHARGES

SATIN



A-T001 *
Silver



A-T002 *
Gold



A-T003 *
Gunmetal Grey



A-T004 *
Pyrite



A-T005 *
Lime



A-T006 *
Coral



A-T007 *
Red



A-T008 *
Garnet Red



A-T009 *
Jade



A-T010 *
Night Blue



A-T011 *
Black

SATIN- BRUSHED ANODIZED
A completely new elegant and fine scratch effect of anodized aluminum.

* FINISHES WITH EXTRA CHARGES

Aluminum Finishes

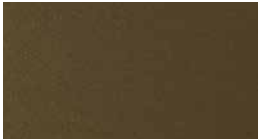
SILK



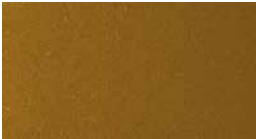
A-S001 *
Silver



A-S002 *
Gold



A-S003 *
Gunmetal Grey



A-S004 *
Pyrite



A-S005 *
Lime



A-S006 *
Coral



A-S007 *
Red



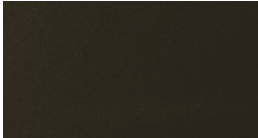
A-S008 *
Garnet Red



A-S009 *
Jade



A-S010 *
Night Blue



A-S011 *
Black

SILK - VELVET TOUCH ANODIZED
It's a prestigious smooth velvet effect of the anodized aluminum that wins at the very first touch.

* FINISHES WITH EXTRA CHARGES

WOOD



A-LG15 *
Cherrywood 35



A-LG25 *
Oak 25



A-LG11 *
Larch 11



A-LG43 *
Walnut 43



A-LG21 *
Wengé 11



A-LG32 *
Rosewood 32



A-LG31 *
Pine 31



A-LG44 *
Oak 44



A-LG24 *
White 24

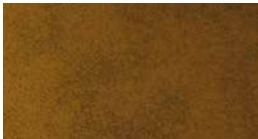
WOOD - SUBLIMATION WOOD EFFECT

This type of finish gives aluminum an aesthetic look very similar to wood. It's a complex process called sublimation that repeats colors and veins of natural wood essences. Painted metal profiles are wrapped in a pre-printed film and put under vacuum. Profiles are then placed into a high-temperature furnace where the pattern printed on the film is transferred onto the metal surface.

* FINISHES WITH EXTRA CHARGES

Aluminum Finishes

CORTEN



A-C001 *
Rust



A-C002 *
Bronze



A-C003 *
Brass



A-C004 *
Oxidized



A-C005 *
Steel

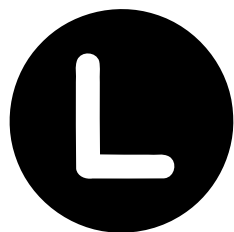
CORTEN STEEL EFFECT

This finish confers the look of real natural Corten steel on profiles. Its peculiarity is its natural oxidation when in contact with air. Once oxidation has occurred it stops and forms a protective layer that doesn't vary over time.

* FINISHES WITH EXTRA CHARGES

IN ORDER TO CONSTANTLY IMPROVE ITS PRODUCTS, THE COMPANY RESERVES THE RIGHT TO MODIFY ITS PRODUCTS AS IT SEES FIT, WITHOUT PRIOR NOTIFICATION. BECAUSE OF THE TECHNICAL LIMITS OF PRINTING AND REPRODUCTION, THE COLOURS OF THE MODELS IN THE CATALOGUE ARE PURELY INDICATIVE AND CAN NOT BE CLAIMED AS REASON FOR COMPENSATION AND LEGAL ACTION.

September 2021



LINE
OFFICE

LINE OFFICE UNIPERSONALE SRL
VIA AGOSTINO NOVELLA, 24
61022 TALACCHIO DI VALLEFOGLIA PU
TEL. +39 0721 479441
info@lineoffice.eu - www.lineoffice.eu



**LINE
OFFICE**

LINE OFFICE UNIPERSONALE SRL
VIA AGOSTINO NOVELLA, 24
61022 TALACCHIO DI VALLEFOGLIA PU
TEL. +39 0721 479441
info@lineoffice.eu - www.lineoffice.eu