

Slim

PARTITION WALL
SYSTEM



LINE
OFFICE

STRUCTURE AND TECHNICAL DATA

TECHNICAL FEATURES 4

HANDLES AND ACCESSORIES 8

TECHNICAL CERTIFICATIONS 16

MODULE CONFIGURATIONS AND TECHNICAL DATA 17

STRUCTURAL COMPONENTS 19

FINISHES

AVAILABLE FINISHES 29

PANEL FINISHES

SOLID COLORS 30

WOOD EFFECT 32

FABRIC EFFECT 33

ALUMINUM FINISHES

SERIES E RAL 35

SPARK 36

SATIN 37

SILK 38

WOOD 39

CORTEN 40

Technical features



Slim is a **demountable monolithic partition wall** designed to meet all functional and aesthetic needs of innovative and cosy workplaces.

ALUMINUM PROFILE

The rectangular extruded aluminum profile has a minimalist design, with a width of 27mm. It is fixed to the ceiling and the floor using expansion plugs.

The profile includes a "glass-stop" system, with a snap-on pressure cover that blocks the glass wall by means of acoustic ballon gaskets.

The partition wall allows top and bottom adjustment up to 10mm (± 5 mm) in height.

The same fixing system using a 27x30 mm extruded aluminum profile is used with wall starting profiles to get an homogeneous perimeter frame with 10mm (± 5 mm) adjustment.

PARTITION WALL THICKNESS 27mm

PANELS AND JOINING

The glazed partition wall is made up of 10/12mm thick laminated glass sheets. The solid partition wall is sandwich-type using 18mm melamine double panels. Glass-to-glass joining is vertically made by

clear polycarbonate profiles with an acrylic foam bi-adhesive tape that ensures a perfect structural and acoustic result. 90° angle and 3-way joining uses specially-designed clear polycarbonate profiles.

ACOUSTIC INSULATION

It is increased by a neoprene-rubber gasket along the entire perimeter of the partition wall when it is in contact with other surfaces like floors, masonry walls, false ceilings etc.

DOORS

The partition wall also includes doors in wood or glass (frameless or with a perimeter aluminum frame), single or double sliding doors, in wood or glass (frameless or with an aluminum perimeter frame).

HINGED DOORS

WOODEN HINGED*

Single/Double Leaf

GLASS HINGED

Single/Double Leaf

FRAMED GLASS HINGED*

(56mm H FRAME) Single/Double Leaf

FRAMED GLASS HINGED*

(16mm H FRAME) Single/Double Leaf

FRAMED WOODEN HINGED*

(56mm H FRAME) Single/Double Leaf

* with Spettra-type door frame only (52mm thick)

EXTERNAL SLIDING DOORS

WOODEN SLIDING

Single/Double Leaf

GLASS SLIDING

Single/Double Leaf

FRAMED SLIDING

(16mm H FRAME) Single/Double Leaf

TO-AND-FRO DOORS

GLASS HINGED

Single/Double Leaf

Door frames in extruded aluminum profile with transparent rebate gasket.

Hollow-core **wooden leaves**, 43mm-thick with 10/10 ABS edging.

Wooden leaf handle selection available in the catalogue.

Glass leaves in 8 or 10mm-thick tempered glass with aluminum hinges.

Glass leaf handle selection available in the catalogue.

GLASS WALLS

Clear laminated glass sheets, 5+5mm thick with 0.38 PVB film, divided in equal modules according to the overall partition wall length.

TYPES OF GLASS

5.5.1 SAFETY LAMINATED

5.5.1 SILENCE LAMINATED

5.5.2 SAFETY LAMINATED

6.6.1 SAFETY LAMINATED

6.6.1 SILENCE LAMINATED

6.6.2 SAFETY LAMINATED

ANGLES

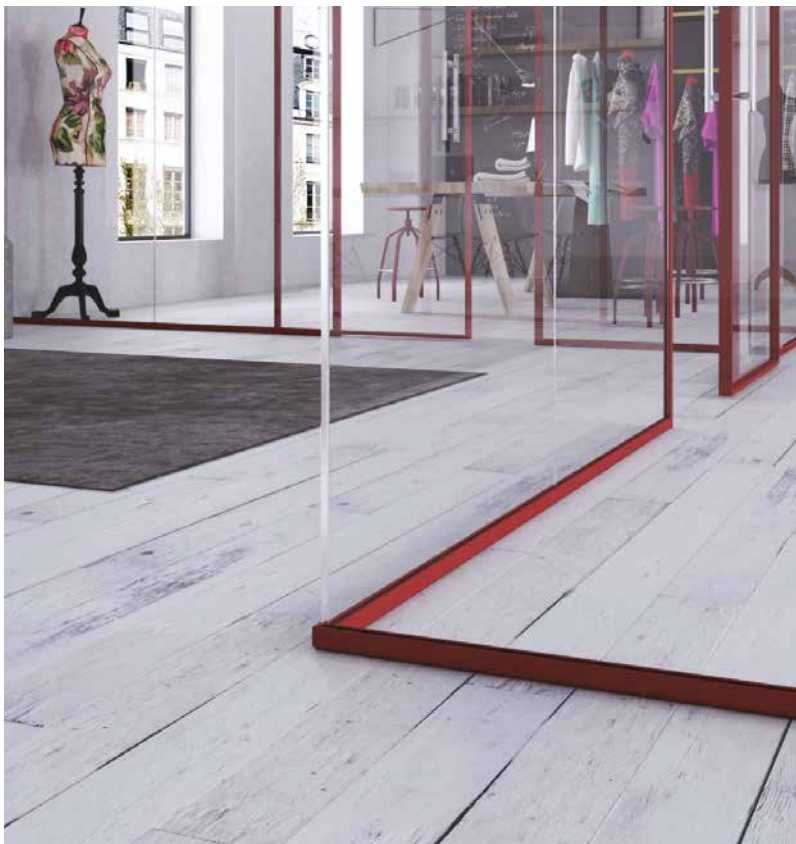
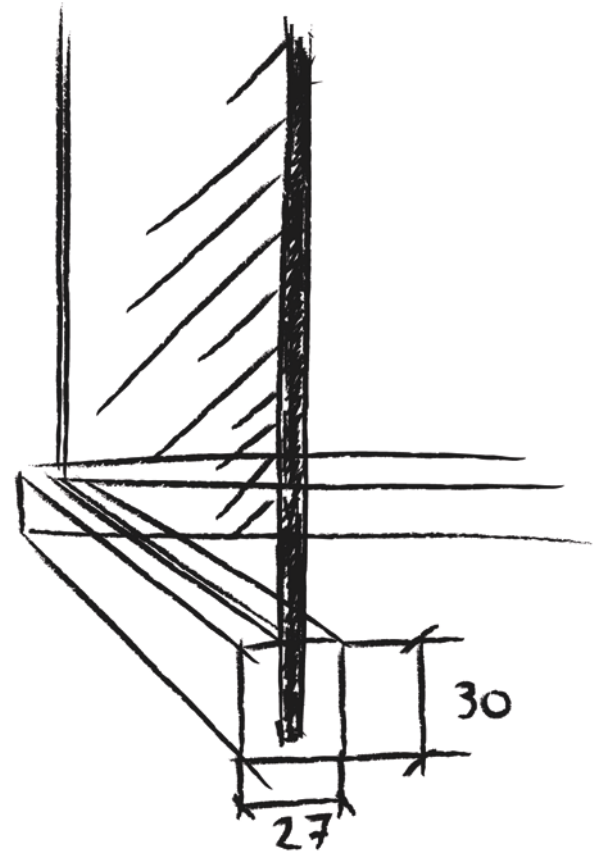
ALUMINUM 90° ANGLE

METHACRYLATE 90° ANGLE

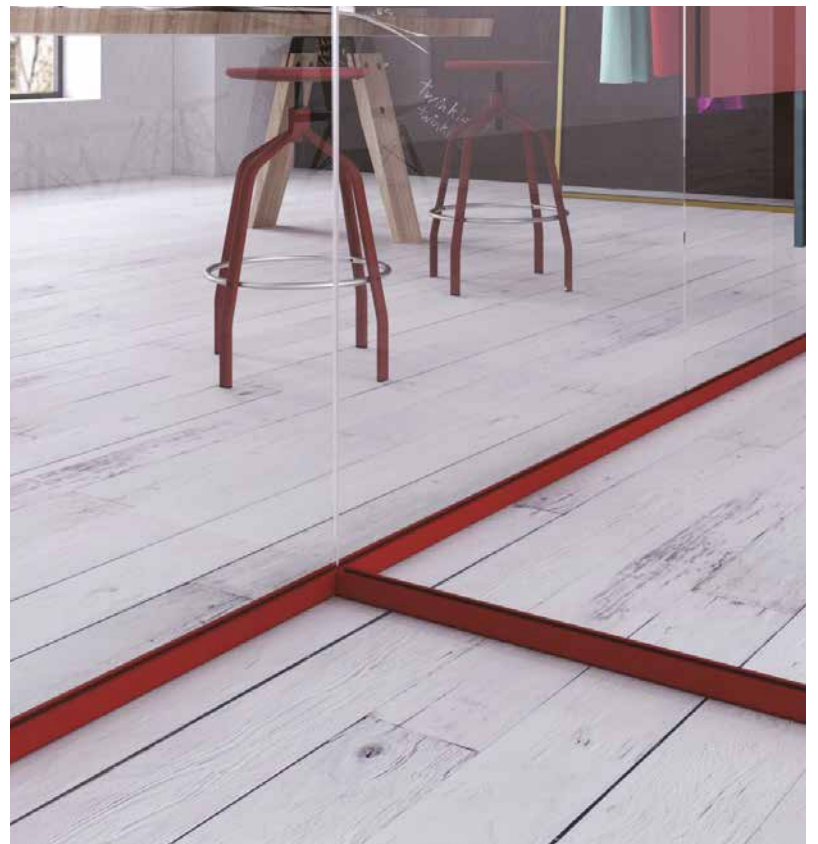
METHACRYLATE/ALUMINUM VARIABLE ANGLE (Ø 10mm)

ALUMINUM VARIABLE ANGLE

METHACRYLATE 3-WAY JUNCTION



90° Angle



3 - Way angle

Sliding door handles

WOODEN AND GLASS DOORS WITHOUT LOCKS



ROUND LADDER PULL HANDLE
40cm H / 120cm H



SQUARE LADDER PULL HANDLE
40cm H / 120cm H



LADDER PULL HANDLE LONDON 22cm H

HANDLES WITH LOCKS



ALNA - Glass Sliding Door



BONAITI - Wooden Sliding Door



Ladder pull handle with floor lock

Hinged door handles

WOODEN HINGED DOORS FOR SPETTRA-TYPE FRAMES



ARLES



PARIS



GENEVE



TOULON



AMSTERDAM

PANIC BAR HANDLES AVAILABLE FOR ALL TYPES OF HINGED DOORS

FRAMELESS GLASS HINGED DOORS FOR SPETTRA-TYPE FRAMES



ARLES



PARIS



GENEVE



TOULON



AMSTERDAM

Hinged door handles

FRAMED GLASS HINGED DOORS - FOR 56mmH SPETTRA-TYPE FRAMES



ARLES



PARIS



GENEVE



TOULON



AMSTERDAM

PANIC BAR HANDLES AVAILABLE FOR ALL TYPES OF HINGED DOORS

FRAMED GLASS HINGED DOORS - 16mm H FRAME



ARLES



PARIS



GENEVE



TOULON



AMSTERDAM

Hinged door handles

FRAMELESS GLASS HINGED DOORS FOR SLIM-TYPE FRAMES



GENEVE



TOULON



AMSTERDAM

Accessories



SNAP-IN IP67 Button



TOUCH ON-UP Button

Certifications

SAMPLE	STANDARD NUMBER	TITLE	CATEGORY OF USE	CLASS	RESULT
GLASS PARTITION WALL 6.6.1 ACOUSTIC GLASS	ITALIAN MINISTERIAL DECREE OF 17 JANUARY 2018	Resistance to static linear horizontal load pursuant to Italian Ministerial Decree of 7 January 2018.	-	-	COMPLIANT 2 KN/m
GLASS PARTITION WALL 5.5.1 GLASS	ITALIAN MINISTERIAL DECREE OF 17 JANUARY 2018	Resistance to static linear horizontal load pursuant to Italian Ministerial Decree of 7 January 2018.	-	-	COMPLIANT 2 KN/m
GLASS WALL 6.6.1 ACOUSTIC GLASS	UNI ISO 7892:1990 + ETAG 003:2012	Resistance shock test with soft and hard body.	3	-	-
GLASS PARTITION WALL 5.5.1 GLASS	UNI ISO 7892:1990 + ETAG 003:2012	Resistance shock test with soft and hard body.	3	-	-
GLASS PARTITION WALL 5.5.1	UNI EN ISO 10140-2:2010 + UNI EN ISO 717-1:2013	Laboratory measurements of airborne sound insulation of partition walls.	-	-	Rw 34 dB
GLASS PARTITION WALL 5.5.1 GLASS DOOR W/ 56mm H FRAME 6mm TEMPERED GLASS	UNI EN ISO 10140-2:2010 + UNI EN ISO 717-1:2013	Laboratory measurements of airborne sound insulation of partition walls.	-	-	Rw 30 dB
GLASS WALL PARTITION 6.6.1 ACOUSTIC GLASS	UNI EN ISO 10140-2:2010 + UNI EN ISO 717-1:2013	Laboratory measurements of airborne sound insulation of partition walls.	-	-	Rw 37 dB
GLASS WALL PARTITION 6.6.1 ACOUSTIC GLASS + DOOR W/ 56mm H FRAME 5+5 ACOUSTIC GLASS WITH DROP SEAL	UNI EN ISO 10140-2:2010 + UNI EN ISO 717-1:2013	Laboratory measurements of airborne sound insulation of partition walls.	-	-	Rw 32 dB
SL- A HINGED DOOR 10mm TEMPERED GLASS	UNI EN 13049 : 2004	Impact resistance	-	1	-
SL- B SLIDING DOOR 10mm TEMPERED GLASS	UNI EN 13049 : 2004	Impact resistance	-	4	-
SL-C HINGED DOOR SLIDING-16mm H FRAME 6mm TEMPERED GLASS	UNI EN 13049 : 2004	Impact resistance	-	4	-
SL-D HINGED DOOR SLIDING-16mm H FRAME 8mm TEMPERED GLASS	UNI EN 13049 : 2004	Impact resistance	-	4	-
SL- A HINGED DOOR 10mm TEMPERED GLASS	UNI EN 947 : 2000	Vertical load resistance.	-	4	-

Module configurations

SINGLE-GLAZED ALL GLASS PARTITION WALL AND DOOR MODULES 100 - 200cm wide

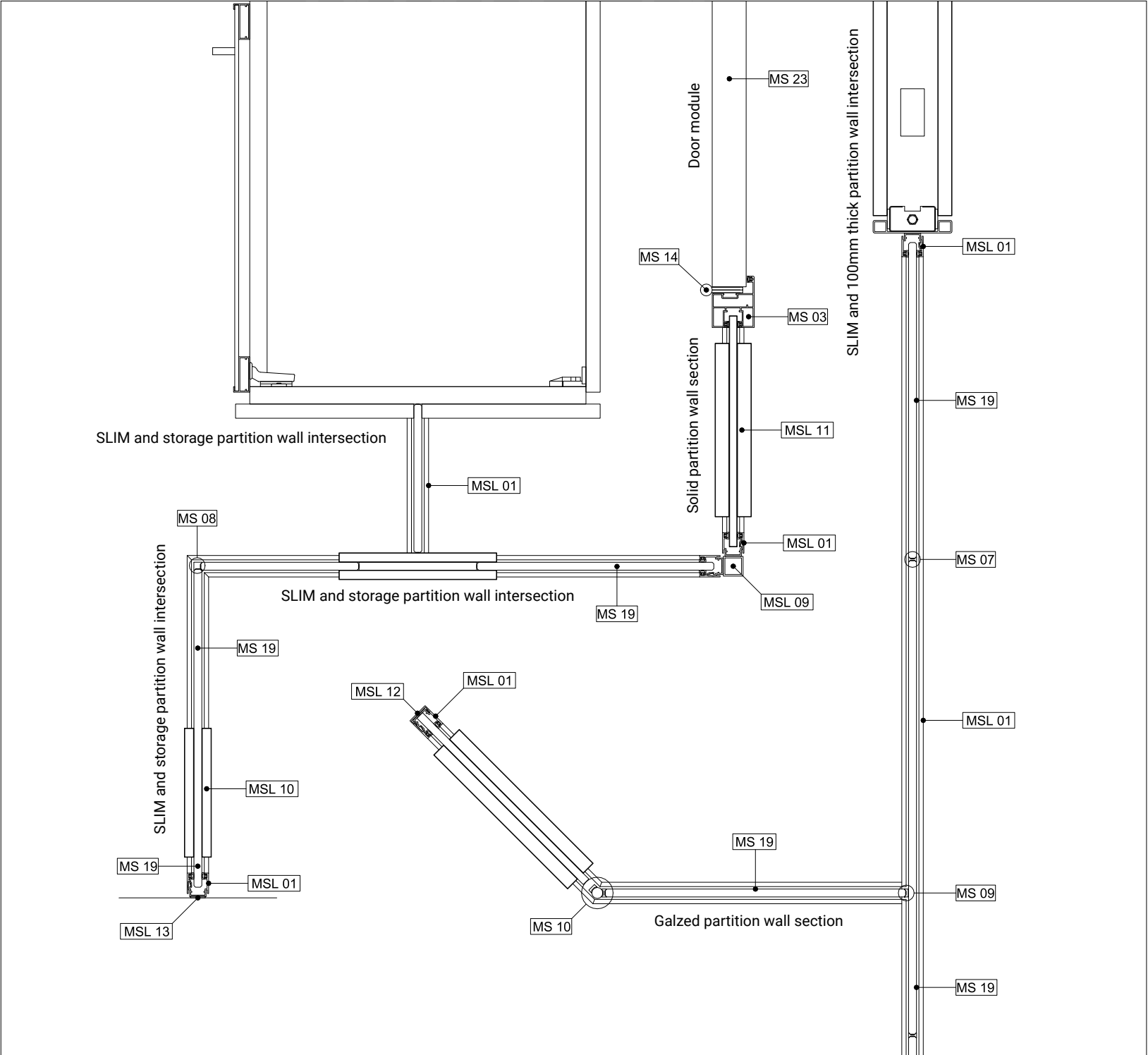


H Overall partition wall height
T Panel height from floor
V Masonry opening net height

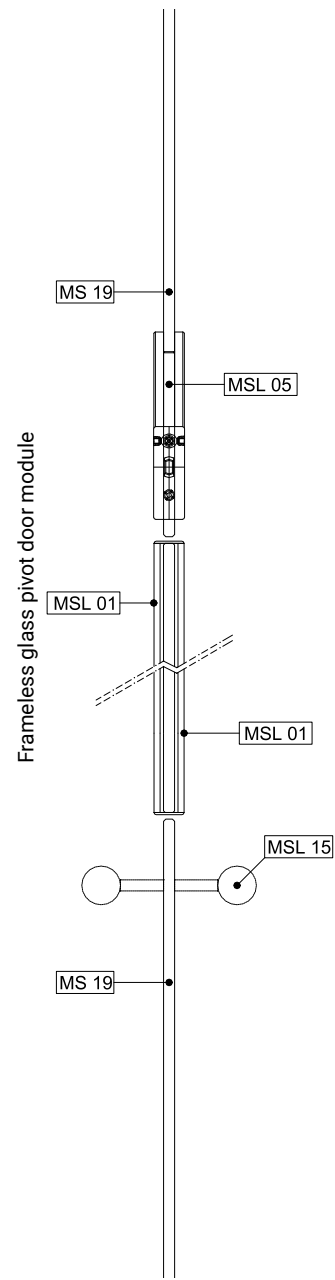
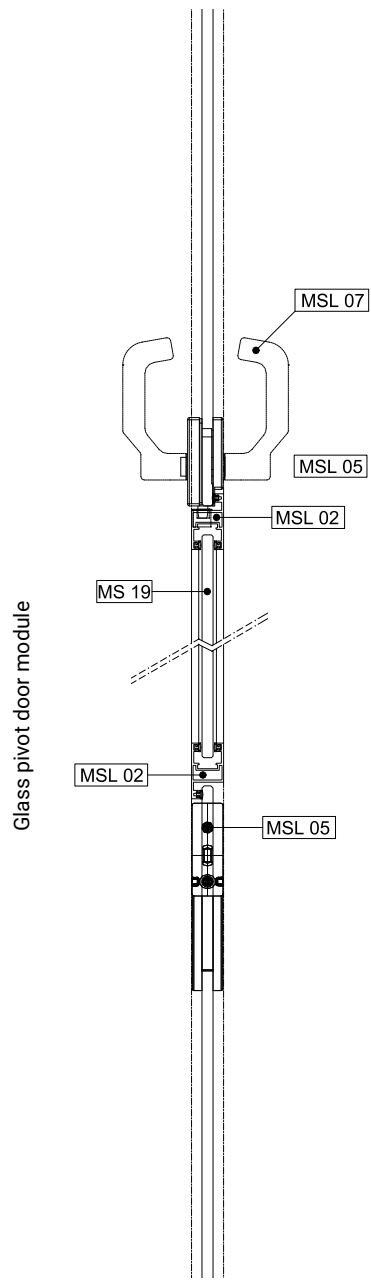
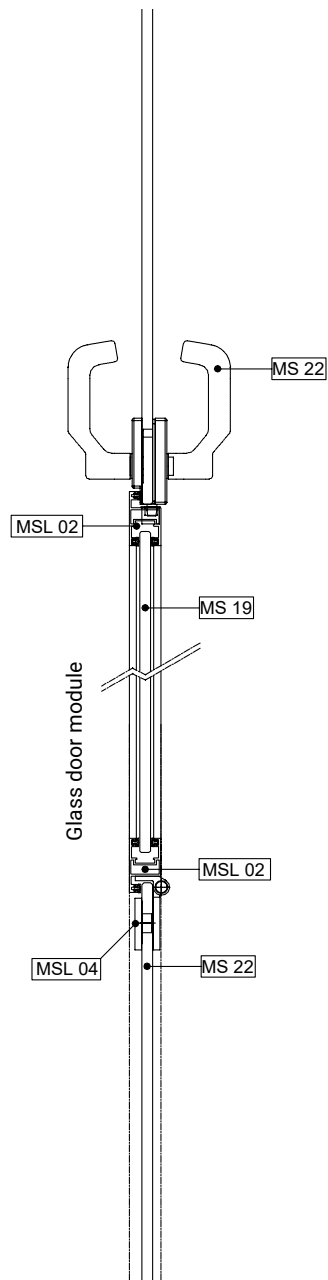
LEGENDA

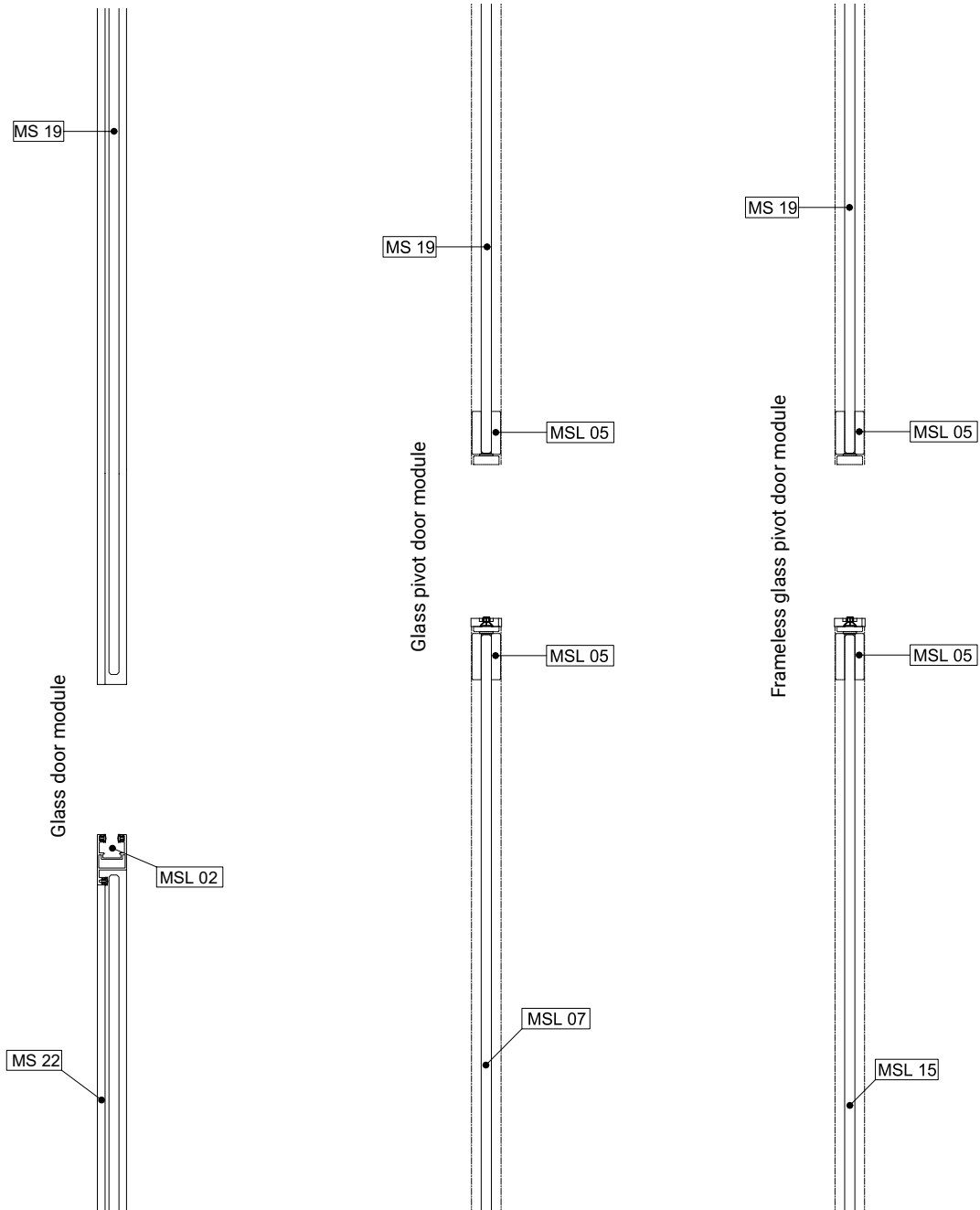
MSL 01 - Perimeter profile
MSL 02 - Hinged door jamb
MSL 03 - Sliding door jamb (MSL 01+MSL 12)
MSL 04 - Glass door hinge
MSL 05 - Glass door pivot hinge
MSL 06 - Magnetic counterlock for glass door
MSL 07 - Glass hinged pivot door leaf
MSL 08 - Glass double-leaf door
MSL 09 - 25X25 profile for 90° angle
MSL 10 - 18mm thick panel glued on glass
MSL 11 - 46mm thick solid panel
MSL 12 - End finishing profile
MSL 13 - Side compensator profile
MSL 14 - Glass double-leaf pivot door
MSL 15 - Frameless glass single/double hinged leaf

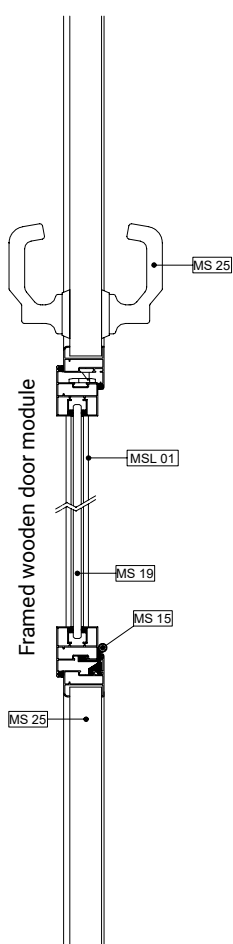
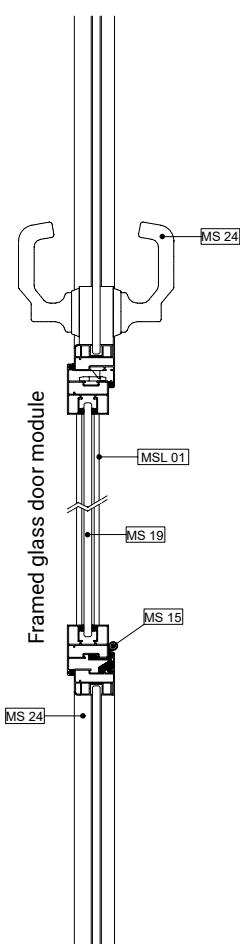
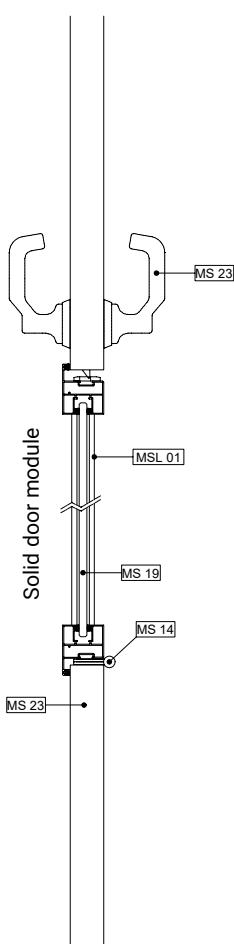
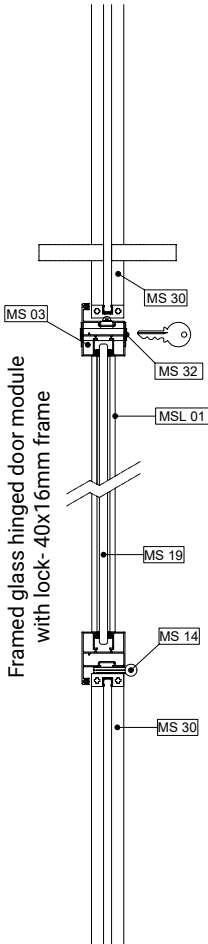
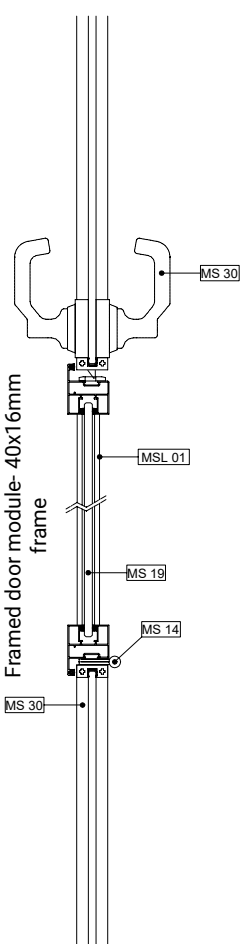
MS 03 - Hinged door jamb
MS 05 - Sliding door track
MS 06 - Sliding door track cover
MS 07 - Linear polycarbonate joining strip
MS 08 - Polycarbonate 90° joining profile
MS 09 - Polycarbonate 3-way joining profile
MS 10 - Variable angle junction
MS 14 - Wooden door hinge
MS 15 - Framed door leaf hinge
MS 16 - Glass sliding door guide
MS 17 - Wooden door guide
MS 18 - Framed sliding door guide
MS 19 - 10mm thick glass sheet
MS 22 - Glass hinged leaf
MS 23 - Wooden hinged leaf
MS 24 - Framed glass hinged leaf
MS 25 - Framed wooden hinged leaf
MS 26 - Glass sliding leaf
MS 27 - Wooden sliding leaf
MS 28 - Framed glass sliding leaf

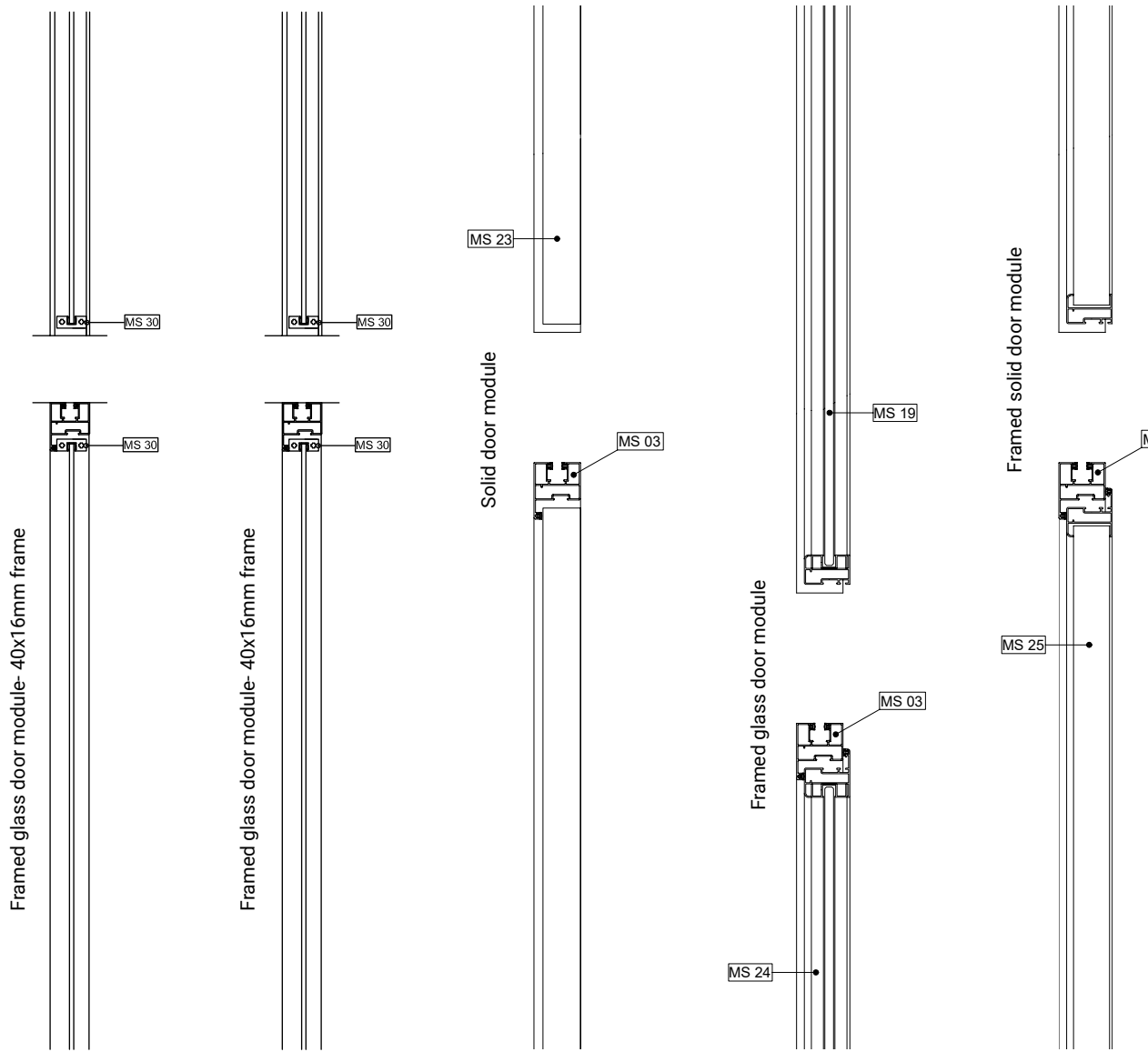


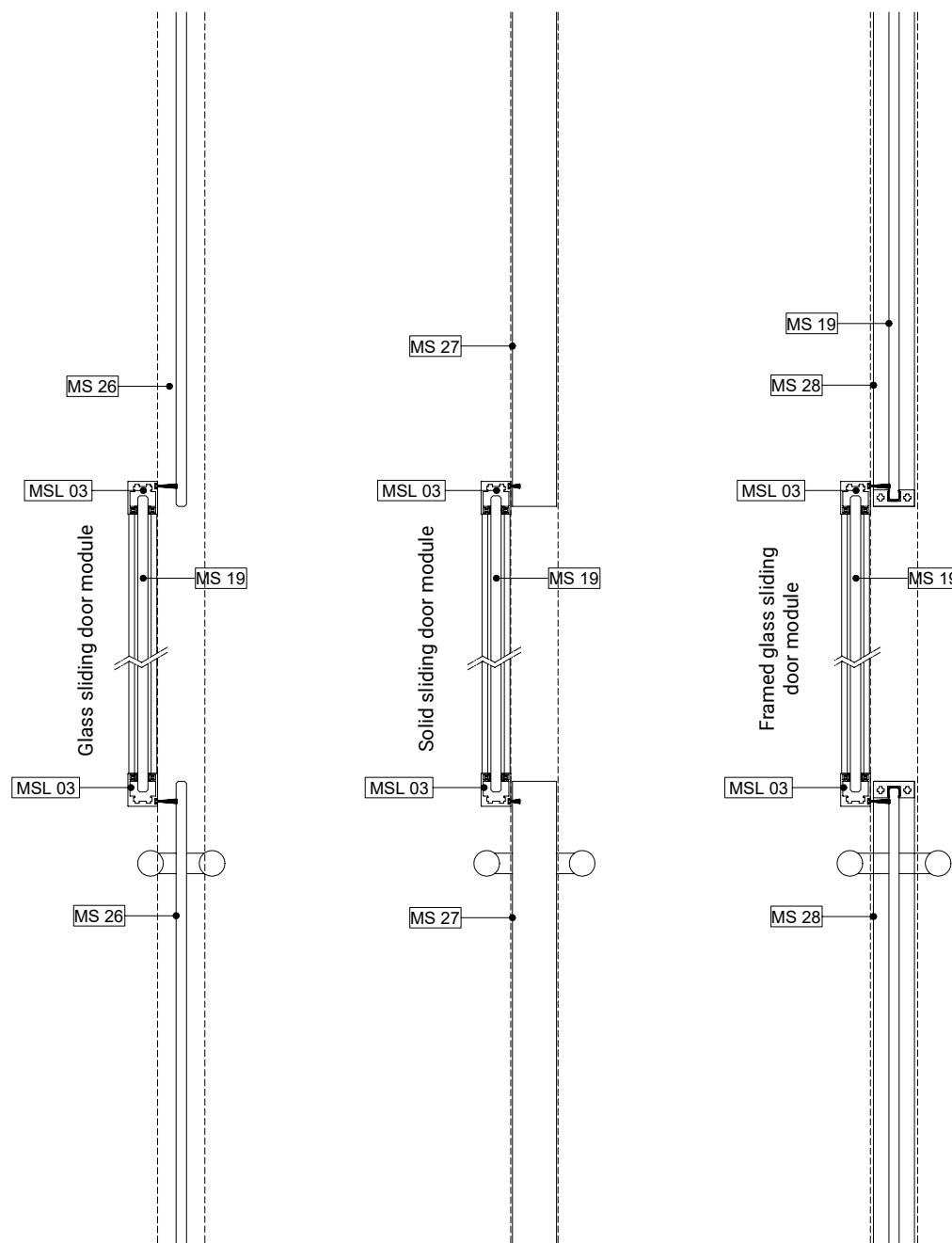


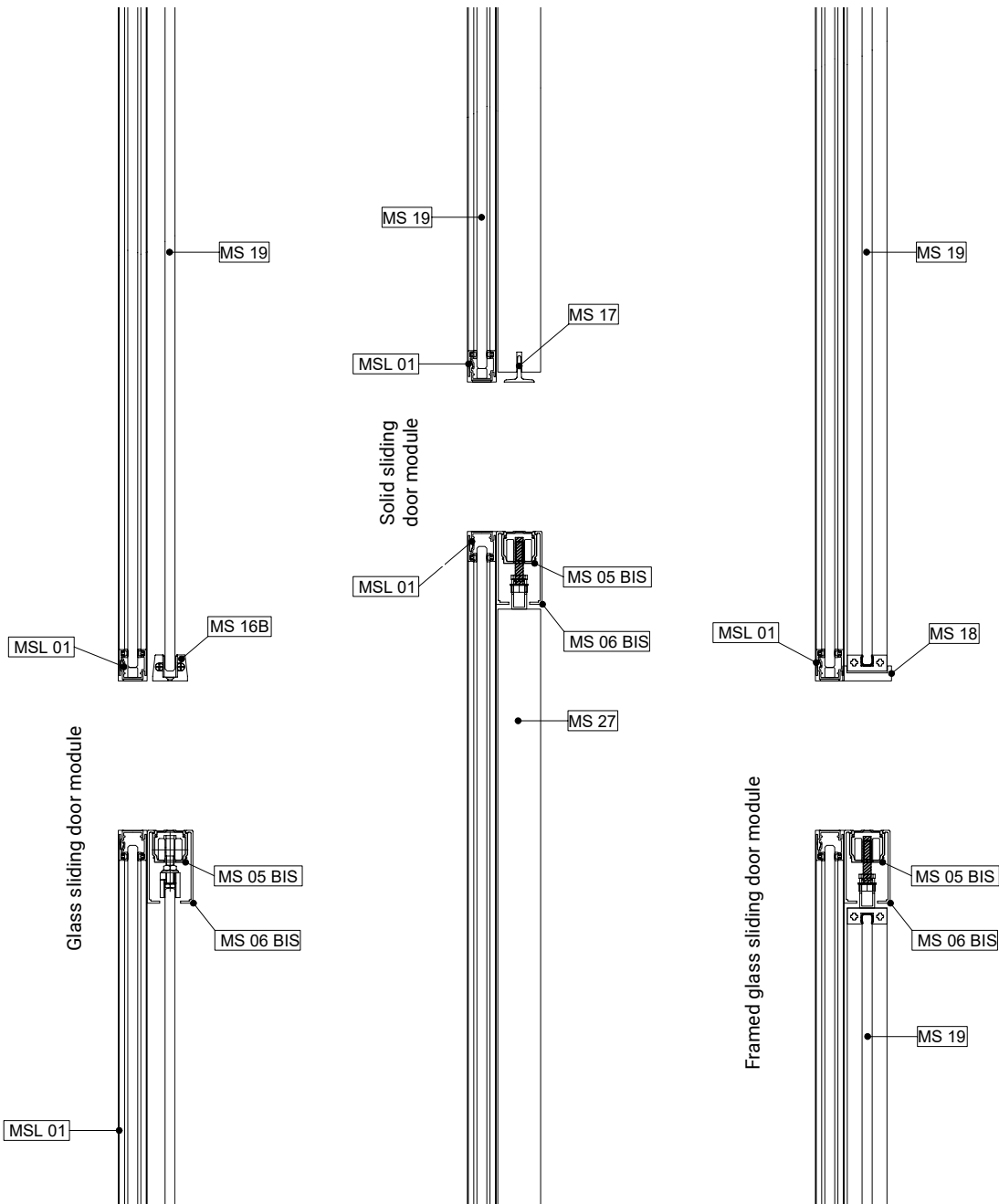












PANEL FINISHES

SOLID COLORS
WOOD EFFECT
FABRIC EFFECT

PANEL TYPES

1. MDF SOUNDPROOF PANEL WITH SCREENBALL MILLING
2. OPAQUE LACQUERED
3. EMBOSSSED LACQUERED
4. GLOSSY LACQUERED
5. VENEERED
6. FIRE -RATED CLASS 1 (B; S2; D0)

ALUMINUM FINISHES

STANDARD FINISHES

SERIES
RAL- GLOSSY EFFECT
RAL- OPAQUE EFFECT

SPECIAL FINISHES

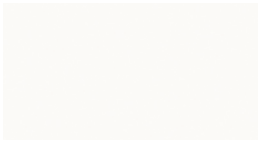
SATIN
SILK
SPARK
WOOD
CORTEN

GLASS FINISHES

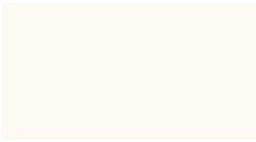
CLEAR
EXTRA CLEAR
FROSTED
LAMINATED WITH MILKY WHITE PVB
Single-glazed windows and framed doors only
SMOKED/BRONZE
MANIFESTATION
CUSTOM COLORS

Panel Finishes

SOLID COLORS



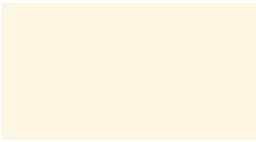
S-0002
Bianco / White



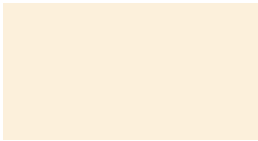
S-0001_1
Bianco opaco / Opaque white



M-0002*
Bianco lucido / Glossy white



S-0003_1
Avorio / Ivory



S-0208
Cipria / Pale pink



S-0207
Sabbia / Sand



S-0020
Tortora / Dove grey



S-0205
Congo / Congo



S-0204
Lava / Lava



S-0021
Testa di moro / Dark Brown



S-0104_1
Giallo velvet / Velvet yellow



S-0006_2
Arancio / Orange



S-0007_1
Rosso / Red



S-0008_1
Rosso bordò / Bordeaux red



S-0202
Piuma / Feather



S-0200
Lime / Lime



S-0201
Petrolio / Dark blue - green



S-0111
Celeste / Sky blue



S-0012_1
Blue / Blue



S-0013_2
Grigio perla / Pearl grey

* FINISHES WITH EXTRA CHARGES

SOLID COLORS



M-0004*
Alluminio / Aluminium



S-0206
Grigio roccia / Rock grey



S-0203
Grigio platino / Platinum
grey



S-0015
Grigio antracite / Charcoal grey



S-0016
Nero / Black



M-0003*
Nero lucido / Glossy black

* FINISHES WITH EXTRA CHARGES

Panel Finishes

WOOD EFFECT



M-0001*
Bianco venato / Veined white



M-L204*
Pino chiaro / Light pine



S-L203
Pino Fano / Fano pine



S-L207
Pino naturale / Natural pine



M-L137_1*
Pino grigio / Grey pine



M-L017*
Old wood / Old wood



S-L139
Acacia / Acacia



S-L034_1
Acero / Maple



S-L206
Acero kiruna / Kiruna maple



M-L015*
Bamboo / Bamboo



S-L208
Abete / Fir



S-L007
Olmo / Elm



S-L101_1
Rovere sbiancato / Withe oak



M-L014*
Rovere / Oak



S-L002_1
Rovere rigato / Striped oak



S-L205
Rovere Nelson / Nelson oak



S-L057_1
Rovere marrone / Brown oak



M-L006*
Rovere tranchè / Tranchè oak



S-L202
Rovere scuro / Dark oak

* FINISHES WITH EXTRA CHARGES

WOOD EFFECT



S-L200
Ciliegio scandinavo /
Scandinavian cherrywood



S-L013_1
Ciliegio sbiancato /
Whitened cherrywood



S-L020_2
Noce scuro / Dark walnut



M-L021_1*
Wengè / Wengè

FABRIC EFFECT



M-L010*
Tessuto chiaro / Light fabric



M-L012*
Tessuto kaki / Khaki fabric



M-L011*
Tessuto tortora /
Charcoal fabric

* FINISHES WITH EXTRA CHARGES

Aluminum Finishes



ALUMINUM

Aluminum is the most abundant metal in the Earth's crust. It represents about 8% by weight of the Earth's solid surface. It is extracted from bauxite and, being a metal, it doesn't absorb humidity. **Aluminum immediately oxidizes when in contact with air and forms a surface protection that makes it impermeable to water and resistant to some chemical substances.**

Light, strong and resistant by nature, it is the main ingredient in the manufacturing of numberless kinds of products. Aluminum, be it raw or lacquered, is **eco-friendly** and does not require any special kind of maintenance.

Thanks to its intrinsic properties and versatility, aluminum is particularly used in the technical furnishing sector (offices, shops, public places), including demountable glass and solid partitions, dividing walls and storage partitions.

Aluminum can be anodized, lacquered in millions of colors with the most varied finish effects to satisfy even the most demanding designers!

Our range includes finishes that can be anodized, opaque, glossy, extra glossy, metallized, textured, wood and Corten steel effects.

SERIES and RAL



A-A001
Silver Anodized



A-A007
Steel Anodized



A-A004
Bronze Anodized



A-A006
Black Anodized



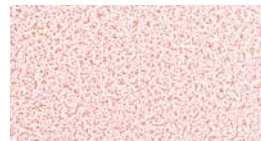
A-B001
Steel



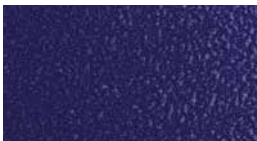
A-B002
Iron



A-0001
Yellow Bump



A-0002
Pink Bump



A-0009
Blue Bump



A-B003
White



A-B004
Black Grinz

RAL PAINT COLORS

GLOSSY Effect
OPAQUE Effect



ANODIZED - Anodized aluminum is pretreated with anodization, a process that creates a layer of artificial oxide on the metal. In substance, oxide covers the aluminum surface making it more weather resistant and not only.

BUMP - It's a rough finish with a "hammered" look which creates different light and dark nuances of the color applied.

PAINTED - Aluminum naturally forms a thin layer of aluminum oxide on its surface that turns to be a perfect substrate for the paint to adhere and be easily removed. Lots of glossy and opaque colors at the same price chosen from the RAL color chart. RAL is a European color matching system used to define colors for paint, coatings and plastics.

* FINISHES WITH EXTRA CHARGES

Aluminum Finishes

SPARK



A-L001 *
Silver



A-L002 *
Cobalt



A-L003 *
Gunmetal Grey



A-L004 *
Pyrite



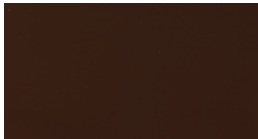
A-L005 *
Lime



A-L006 *
Coral



A-L007 *
Red



A-L008 *
Garnet Red



A-L009 *
Jade



A-L010 *
Night Blue



A-L011 *
Black

SPARK- GLOSSY ANODIZED
A glossy effect that enhances the bright anodized finish.

* FINISHES WITH EXTRA CHARGES

SATIN



A-T001 *
Silver



A-T002 *
Gold



A-T003 *
Gunmetal Grey



A-T004 *
Pyrite



A-T005 *
Lime



A-T006 *
Coral



A-T007 *
Red



A-T008 *
Garnet Red



A-T009 *
Jade



A-T010 *
Night Blue



A-T011 *
Black

SATIN- BRUSHED ANODIZED
A completely new elegant and fine scratch effect of anodized aluminum.

* FINISHES WITH EXTRA CHARGES

Aluminum Finishes

SILK



A-S001 *
Silver



A-S002 *
Gold



A-S003 *
Gunmetal Grey



A-S004 *
Pyrite



A-S005 *
Lime



A-S006 *
Coral



A-S007 *
Red



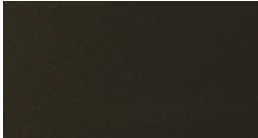
A-S008 *
Garnet Red



A-S009 *
Jade



A-S010 *
Night Blue



A-S011 *
Black

SILK - VELVET TOUCH ANODIZED
It's a prestigious smooth velvet effect of the anodized aluminum that wins at the very first touch.

* FINISHES WITH EXTRA CHARGES

WOOD



A-LG15 *
Cherrywood 35



A-LG25 *
Oak 25



A-LG11 *
Larch 11



A-LG43 *
Walnut 43



A-LG21 *
Wengé 11



A-LG32 *
Rosewood 32



A-LG31 *
Pine 31



A-LG44 *
Oak 44



A-LG24 *
White 24

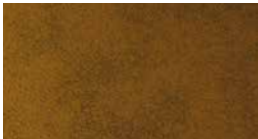
WOOD - SUBLIMATION WOOD EFFECT

This type of finish gives aluminum an aesthetic look very similar to wood. It's a complex process called sublimation that repeats colors and veins of natural wood essences. Painted metal profiles are wrapped in a pre-printed film and put under vacuum. Profiles are then placed into a high-temperature furnace where the pattern printed on the film is transferred onto the metal surface.

* FINISHES WITH EXTRA CHARGES

Aluminum Finishes

CORTEN



A-C001 *
Rust



A-C002 *
Bronze



A-C003 *
Brass



A-C004 *
Oxidized



A-C005 *
Steel

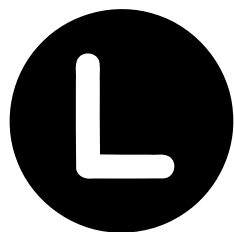
CORTEN STEEL EFFECT

This finish confers the look of real natural Corten steel on profiles. Its peculiarity is its natural oxidation when in contact with air. Once oxidation has occurred it stops and forms a protective layer that doesn't vary over time.

* FINISHES WITH EXTRA CHARGES

IN ORDER TO CONSTANTLY IMPROVE ITS PRODUCTS, THE COMPANY RESERVES THE RIGHT TO MODIFY ITS PRODUCTS AS IT SEES FIT, WITHOUT PRIOR NOTIFICATION. BECAUSE OF THE TECHNICAL LIMITS OF PRINTING AND REPRODUCTION, THE COLOURS OF THE MODELS IN THE CATALOGUE ARE PURELY INDICATIVE AND CAN NOT BE CLAIMED AS REASON FOR COMPENSATION AND LEGAL ACTION.

September 2021



LINE
OFFICE

LINE OFFICE UNIPERSONALE SRL
VIA AGOSTINO NOVELLA, 24
61022 TALACCHIO DI VALLEFOGLIA PU
TEL. +39 0721 479441
info@lineoffice.eu - www.lineoffice.eu



**LINE
OFFICE**

LINE OFFICE UNIPERSONALE SRL
VIA AGOSTINO NOVELLA, 24
61022 TALACCHIO DI VALLEFOGLIA PU
TEL. +39 0721 479441
info@lineoffice.eu - www.lineoffice.eu